

# NORTHLEW NEWS

**August 2019**

[.Northlewnews@gmail.com](mailto:Northlewnews@gmail.com)



The battle of Crécy, 26<sup>th</sup> August 1346

## **Your Parish Councillors**

<b>Chair:</b>	<b>Vice Chair:</b>
Joanna Wilson: 01409 220254	Celia Rundle: 07432 512499
Mark Rundle: 01837 53314	Bryan Dufty: 01837 871256
Kate Hawkins: 07775 621756	Terry Hatt: 07811 383397
Holly Dancer: 01409 221881	Steve Smith: 01409 221677
Steve Shelton: 07920 884888	Clerk: Sue Main: 07956 312047
Cllr James McInnes: 01837 861364	Cllr Patrick Kimber 01837 810057

## **Note from the Editor**

The Parish Council website has now been launched and can be found by copying and pasting the following link into your search engine.

<http://www.northlewparrishcouncil.org.uk/>.

The website is currently in a relatively basic format and is an ongoing project. The plan is to develop the scope of the website over time, so please bear with us!

Thank you to everyone who contributes to the Northlew News whether on an ad hoc or regular basis. A very interesting article this month on the importance of the longbow in the battle of Crécy – see page 7.

The deadline for copy for September's edition is Saturday 20<sup>th</sup> August. If you would like to receive an electronic copy of the Northlew News then please email at [northlewnews@gmail.com](mailto:northlewnews@gmail.com).

Best wishes



## **St Thomas of Canterbury Parish Church**

### **Services**

#### **4<sup>th</sup> August**

9:30 Holy Communion

#### **11<sup>th</sup> August**

9:30 am Morning prayer

#### **18<sup>th</sup> August**

9:30 am Holy Communion

#### **25<sup>th</sup> August**

9:30 am Family service

### **Church Festival**

We commemorated dear old Archbishop Thomas Becket on a brilliantly sunny day. The band played, the children performed the untimely end of Thomas, copious amounts of tea were drunk, the maypole was danced around and the various stalls were well patronized. Everyone enjoyed the afternoon in what is a perfect setting on such a sunny day. Very many thanks to all those who made this possible and to all those who supported this important day in our church year. As mentioned before the patronal festival is to remember Becket and pay our respects to his memory but it is also our main fundraising event of

the year. This year the church funds have benefited by the very welcome amount of £795.45. Our very sincere thanks to everyone.

### ***Ploughman's lunch***

Our ploughman's lunch is a week earlier than usual and is on Saturday 31<sup>st</sup> August. There is a list on the table in the churchroom – please just add your name and pay on the day or phone 221036 to book. Everyone welcome.

### ***Collecting for Okehampton Food Bank***

At a recent meeting the PCC decided to collect donations of food for Okehampton Food Bank. A box is now at the back of the church with a comprehensive list of items that are needed in the box. Donations of non-perishable goods are needed such as:

- Tinned food: tomatoes, beans, tuna etc.
- Packet foods: rice, pasta, couscous, cereals, porridge oats, tea and coffee.
- Cleaning products and toiletries.

We hope that you are able to support this project.

Thank you.

## ***Northlew Methodist Church***

### ***Services***

#### ***4<sup>th</sup> August***

9:30 am Mrs Angela Banfield

#### ***11<sup>th</sup> August***

9:30 am Rev Liz Singleton

#### ***18<sup>th</sup> August***

9:30 am Mr Dean James

#### ***25<sup>th</sup> August***

9:30 am Service at Boasley

### ***50/50 Shop and coffee morning***

Saturday 31<sup>st</sup> August

10 am – 12 noon. Cake and savoury stall, coffee morning and 50/50 shop.

All welcome

-----

### ***Coffee 'n' Chat Outing***

#### ***Thursday 15<sup>th</sup> August***

Outing to Falmouth



We will leave Northlew Square at 9:00 am. Tickets for adults cost

£7 and £3.50 for children

Please book with Marlene 01409 221 508

## **Northlew Stores C I C.**

### **A summer of local continued..**

#### **Meal deal**

Every Friday is “meal deal” Friday, a bargain for £3.50 (includes; sandwich, drink, crisps, cake & fruit), ideal if you are going out for the day, or pick up for your lunch on the way to work we are open from 7.30 on Fridays.

#### **Fresh fruit, vegetables and flowers**

Fridays is also fresh fruit, veg and flower day, so pop along and see what’s available, get something for the weekend.

#### **Ice creams**

A reminder that we are selling ice creams in a cone, £1.00, or individual carton £1.25. The cartons are environmentally friendly and compostable and so are the spoons – zero plastic, a perfect accompaniment to an afternoon walk round the village!

#### **Advertising events in the parish**

If you are an organisation which is holding a local event and would like a flyer to go in the Okehampton Times, please speak to Paula as we are happy to pop a leaflet in each paper – free! It must be an event

which is being held in the parish of Northlew & Ashbury.

#### **Pop up events**

We will be having a series of “pop-up” outside the shop events (always weather permitting!) Follow our facebook page and lookout for flyers in the shop and on the notice boards for more details.

A free opportunity for local crafts/charities/organisations – if you would like to have a “pop-up” event outside the shop we will be happy to accommodate you. This is only available for those who live in the parish of Northlew & Ashbury, giving you a chance to show off your skills, highlight your organisation and/or promote yourself. Sorry no knife throwers, sharp shooters or fire eaters!

#### **Food bank collection point**

We now have a collection point for the local foodbank, so if you have any items you would like to donate please pop them in the box under the reserved papers. There is a list of items needed on the notice board outside the Church rooms.

#### **Newspapers and magazines**

If you would like to order newspapers or magazines please do so, we get commission on sold

items and every little helps! Thank you to all our customers for your continued support.

### **Opening hours**

A reminder we are now open all day Monday – Friday 8:00 am – 5:00 pm. Full opening times below. Please be aware that on rare occasions we may not be able to fully cover the hours and may have to close early – we will give notice where possible.

**Monday:** 8:00 am – 5:00 pm

**Tuesday:** 8:00 am – 5:00 pm

**Wednesday:** 8:00 am – 5:00 pm

**Thursday:** 8:00 am – 5:00 pm

**Friday:** 7:30 am – 5:00 pm

**Saturday:** 9:00 am- Noon

**Sunday:** 9:00 am - Noon

**Bank Holidays:** 9:00 am - Noon

**Christmas:** Closed

**Boxing Day:** Closed

**New Year's Day:** Closed

For more information or to join the volunteers please contact:

Paula 07805 427006  
or Dan: 01409 221228

Email: [Northlewshop@gmail.com](mailto:Northlewshop@gmail.com),  
Facebook: @northlewshop

## **Northlew Village Square Telephone Box**



Over the next few weeks a small, but determined, group of residents are planning to restore the current sad

looking eyesore (as shown in the photograph) to its iconic former glory!

So, if anyone has any tins of exterior quality gold paint (however small the amount) or interior/exterior grey metal paint they would be happy to donate please do let the editor know as we would be delighted to make use of it!

-----

## **Northlew Post Office**



The post office is open from 9:30 am to 12 noon in the Church Room on Monday and Friday mornings.

## **Northlew Silver Band Carnival**



This year the carnival will be on **Friday 1<sup>st</sup> November** - make a note in your diaries!

A special plea this year!

Could parents start thinking of costumes that their children might wear for the Fancy Dress Parade. There are classes for all ages but we know it takes some forethought to dream up suitable outfits.

So please start thinking now!

Oh, and by the way - there is an Adults Class too. It would be good to have a few more adults instead of the usual two!

Martin Perry, Chairman

## **Daisy Chain Group**

**Please note the change of date  
from 13<sup>th</sup> August to 6<sup>th</sup> August**



**Tuesday 6<sup>th</sup> August**

7 pm Garden Party  
Howards Gorhuish, Northlew,  
EX20 3BT .

Tel: 01837 658750.

Directions: Follow Northlew to Okehampton Road – past Durdon Cross crossroads. Take first right signposted Higher Gorhuish and Cruft. Follow road past Higher Gorhuish Farm then round sharp bend to right and left. First gateway on left by telephone pole into our meadow for parking. Everyone welcome, please bring nibbles to enjoy in the garden.

Sessions, as always, are £2 towards our kitty. We are a friendly group, welcome to all.

For more information please call  
Gina Farrow 01409 221238

## **The Battle of Crécy 26<sup>th</sup> August 1346: the Longbow Proves Decisive The Hundred Years War**

While the longbow emerged as an important weapon towards the end of the Middle Ages, in particular thanks to its effective use by the Welsh in the Anglo-Norman invasion of Wales (1277-1283) by Edward I, documentary evidence for the first mass use of archers equipped with longbows comes from King Edward III's reign (1327-1377). This was dominated by the Hundred Years War, which in fact lasted 116 years, from 1337-1453. It was perhaps due this continual state of war that so many historical records survive which raise the longbow to legendary status; first at Crécy and Poitiers, and later at Agincourt.

The battle of Crécy is the first well-documented use of large numbers of archers in a land battle. The earlier battle of Sluys in 1340 involved English longbowmen but this was a battle at sea and the archers were on warships. The battle of Crécy took place in north-east France between a French army commanded by King Philip VI and the English army led by King Edward III. The French attacked the English while they were traversing northern France

during the Hundred Years' War resulting in an English victory and heavy loss of life among the French. During a brief archery duel a large force of French mercenary crossbowmen was routed by English longbowmen. The French then launched a series of cavalry charges by their mounted knights. These were disordered by their impromptu nature, by having to force their way through the fleeing crossbowmen, by the muddy ground, by having to charge uphill, and by the pits dug by the English. The attacks were further broken up by the effective fire from the English archers, which caused heavy casualties. By the time the French charges reached the English men-at-arms, who had dismounted for the battle, they had lost much of their impetus. The French charges continued late into the night, all with the same result: fierce fighting followed by a French repulse. The English promptly laid siege to the port of Calais. The battle crippled the French army's ability to relieve the siege; the town fell to the English the following year and remained under English rule for more than two centuries, until 1558. The battle established the effectiveness of the longbow as a dominant weapon on the Western European battlefield.

## **Key advantage of the longbow: range and rate of fire**

The longbow had two key advantages. The first was range. It is not possible to know with precision the range of a medieval longbow as very few have survived in working condition and the range is determined by the draw weight. However, replicas have been made of examples found on the *Mary Rose* (1545) and one of these with a draw weight of 150 lbf (pound-force or 667 Newtons) shot an arrow 360 yds (328 m). Estimates suggest that the range at Crécy would have been similar. It is believed that at the time, the crossbows employed by the French had an inferior range, although over the subsequent decades the crossbow range improved, while the longbow remained the same. The second was firing rate. English longbow men could fire 10-12 twelve arrows in a minute while the crossbow men employed by the French could only manage 3-5 volleys in the same amount of time. Arrows loosed (guns are fired, arrows are loosed) from longbows had sufficient power to penetrate light armour or armour made from iron, depending on thickness, according to contemporary records and modern tests. Steel armour provided much greater

protection. However, the weak link for knights on horseback was the vulnerability of horses to injury as they were much less heavily protected.

## **The Modern Day**

Longbows are still being manufactured (traditionally from yew) and used in competitions, many of them originating to medieval times. These include the familiar target shooting, clout shooting and shooting at the marks. A grizzly form of target shooting from the early days of the longbow ages was that of “Turks-head” shooting. Returning crusaders brought back barrels of Turks or Saracens heads preserved in vinegar. On special occasions these would be brought out to shoot at. The names of many pubs in England are a reminder of how popular this form of shooting was. Shooting at the marks involves shooting at flags set a variety of distances apart. Golf is a direct descendant of shooting at the roving marks.

Sources: Wikipedia; Historic UK  
<https://www.historic-uk.com/HistoryUK/HistoryofEngland/The-Longbow/>;  
<https://www.longbow-archers.com>



## ***Gardening tips for the month***



The weather seems to have settled down into a halfway decent summer at last (I'm writing this in the 4th week of July, so apologies if it all goes pear- shaped after that statement).

### ***Deadheading and cutting back***

This is actually one of the quieter times of the gardening year. Most of the jobs are gentle ones like deadheading to prolong flowering or cutting early flowering perennials like aquilegias, oriental poppies, hardy geraniums and nepeta, right down to the base. I even chop back achilleas just as they are beginning to fade. Whilst aquilegias and oriental poppies are unlikely to flower again, they will put new fresh growth on. The other examples will often flower again within a few weeks, especially if given a liquid feed of tomato or seaweed fertiliser.

### ***Lavender***

Lavender can be pruned back once the flowers have faded. Don't cut back into old wood unless you need to renovate them. Renovation is actually best done in Spring (and only cut back to where there is new growth near the base of a branch. If there are no new leaves, even tiny ones, then it is unlikely to re-sprout from that point. At this time of year, just trim to about an inch below the flower stalks. Doing this helps these sub - shrubs from splaying outwards in that ungainly fashion.

### ***Summer fruiting raspberries***

Summer fruiting raspberries that have finished production can have any fruited canes cut right down to the base. Start to tie in any new canes (they will fruit next year), onto wires or canes.

### ***Sow hardy annuals***

You can sow hardy annuals into pots or borders between July and September, to flower next Spring and Summer. I noticed years ago, that plants that had been nibbled right down by rabbits, grew into fabulous compact plants that flowered endlessly. You can replicate this in early Spring by cutting them back really hard. It

feels sacrilegious, but it really does work.

### ***Trimming hedges***

Deciduous hedges can be given a light trim if needed.

### ***Watering is key***

Remember to water rhododendrons, camellias and azaleas now as this is the time that they form the flower buds for next year.

### ***Pests: Lily beetles and powdery mildew***

Watch out for Lily beetles and powdery mildew now.

Lily beetles are becoming far more common in this part of the country. They are a vivid scarlet but have the disconcerting habit of dropping off the plant as you reach in to squash them and playing dead on the ground. Their undersides are brown, so they become very hard to spot as they lie on their backs. Keep checking under the leaves for their larvae. These delightful creatures live within a blob of their own excrement and can strip a lily stem within days.

Powdery mildew can be a real issue in dry spells. It appears as a powdery film or series of blotches

on the leaves and stems, but can also cause a purplish discoloration on the leaves of woody plants like roses, honeysuckle, hawthorn etc. Courgettes and aquilegias are especially susceptible. You can get mildew resistant cultivars, but prevention is better than cure. Dry roots will pre-dispose a plant to mildew, but when watering, don't wet the foliage. Mulching early in the season helps too. Removing infected leaves and stems at the end of the season is vital for minimising a reservoir of over-wintering spores that will start the cycle again next year. Spraying with an approved fungicide will work but check that it doesn't contain any unnecessary pesticide too. If pests aren't a problem, why spray and inadvertently kill beneficial insects? It's also worth considering spraying with milk and water. A mix of 60% water and 40% milk sprayed on fortnightly can help if applied as a preventative or when the mildew first appears. There hasn't been a huge amount of research done on this treatment, but it does seem to help in the early stages. Mind you, I've had to use it in a polytunnel and it pongs a bit in warm weather.

### ***Enjoy the fruits of your labour!***

You can definitely justify spending time sitting in your garden now, taking photos and planning. Don't forget to note where there are gaps or where things may not quite be working.

But definitely relax and enjoy it too...with a cuppa or a glass of wine.

Happy gardening!

Harriet

---

### ***Northlew Silver Band Devon's only Village Silver Band over 100 years old***



Busy couple of weeks in July especially the church festival day where we played in the church, at the fête and outside the Green Dragon all in one afternoon. For the outdoor playing we were joined by friends from Hatherleigh, Okehampton and Launceston bands and dusted off some of the old classics. I'm led to believe we could be heard all over Northlew.... so sorry to some and wasn't it

good to others. In the year that the Ambridge fête is likely to be without the Hollerton brass band in the Archers it was great to be back.

The juniors have been even busier in mind, the Duck Race in Ashbury on Friday followed by playing at fête the on Saturday. The next weekend we opened the Lydford summer fair early afternoon and moved on to Hatherleigh to again open the Hatherleigh bands cider and pasty evening in the square. It was incredibly impressive the youngsters playing so well in public, most of them for the first time. I'd forgotten that there might be some nerves as there's normally no sign of that at the practices and to play so well in front of so many people was brilliant.

### ***Join us for band practice!***

Beginners, every Wednesday in the band hut at 6:15 pm. Full Band, every 2<sup>nd</sup> Wednesday at 7:30 pm - 9:00 pm

Anyone wanting to try to play an instrument please get in touch. Training band numbers are up again. We've had 13 at the practice for the last few weeks which is amazing and means with helpers we've outgrown the band room

and have popped over to Hatherleigh to the new band room there behind the new doctors surgery.

All welcome, for more information please contact:

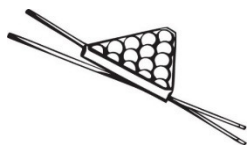
Tim Williams 01409 221754

or

Martin Perry 01409 221376

---

## ***Northlew and Ashbury Snooker Club***



Come and join us!

We currently have vacancies

for membership and we would be pleased to see new faces over the newly refurbished tables. One team plays in the Bude league each winter. New members are very welcome. There is a small membership fee to join.

For more information about the club please call 01409 221919 or Simon on 01409 221881

## ***The Green Dragon***



This historic 18<sup>th</sup> century inn is located in the village square at the heart of Northlew.

The Green Dragon is open:

Lunchtime: 12 – 2 pm

Lunch is served every day except Saturday

Monday – Saturday: open 6 pm

Food served from 6 pm - 9 pm

Sunday: open 7 pm (no food)

## ***Quiz Nights***

Look out for the The Green Dragon quiz nights.

Pop into the Green Dragon to find out more or call Dan on 01409 221228.

---

## **Northlew and Ashbury Primary School PTFA**



**Northlew & Ashbury  
Primary School**

Northlew Parents, Teachers and Friends Association (PTFA) raises vital funds for the school through various events throughout the year such as the Duck Race and the Christmas Fayre.



### ***The Duck Race!***

This year the duck race was held on Friday 5<sup>th</sup> July at Wadland Barton Farm. The PTFA would like to thank everyone who helped at and/or supported this event which raised a massive £1,034.79!

We would also like to say a huge thank you to everyone for their, much appreciated, donations over the last few months and continued support. The children at the school will benefit greatly from all the money raised.

If you would like to help support the PTFA then please contact Louise Fewings (07507 301589) or Michelle Hughes.

## **Northlew and Ashbury Produce and Craft Show 2019**

**Saturday 7<sup>th</sup> September**

Just a final reminder that show schedules are now available at the following locations:

- the Village Shop
- the Church Room
- outside the Victory Hall
- the Green Dragon.

All the information you need is in the show schedule.

If you are a seasoned exhibitor, or have never entered a show before, this is the show for you and your family.

Check on the Northlew and Ashbury Facebook Group for more information about the show, including the words to the two poems, which can be handwritten and illustrated by children aged 9 years and above.

Entry forms can be handed in to the box in the Village Shop from Friday 23<sup>rd</sup> August until Wednesday 4<sup>th</sup> September.

Exhibits have to be delivered to the Victory Hall between 8:30 am and

10:30 am on Saturday 7<sup>th</sup>  
September.

Doors open, with light refreshments from 1:30 pm and presentations begin at 3:30 pm. Entry is free.

*The Northlew and Ashbury Produce and Craft Show Committee*

This year's nominated charity is the Salvation Army, Registered Charity Number 214779

-----

## ***Nature Watch: a year in the life of a pond - July***

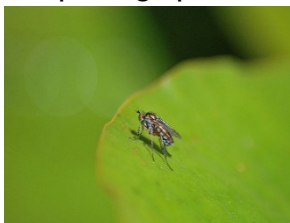
### **Frogs**

I am pleased to say that at least some of my frogs are still alive and kicking. Whilst doing a bit of tidying around the pond perimeter, I disturbed a few youngsters, who quickly hopped into the pond for safety. Time will tell whether the frogs out and around the Parish have managed to survive. All this dry weather can't be helping.

### **Other wildlife**

I have got *Poecilobrothus nobilitatus*!! Don't worry it's not a contagious disease, it's a type of fly that likes to be near ponds. It

belongs to the 'long-legged fly' family of Dolichopodidae, of which there are over 7000 species. Its common name is the Semaphore fly, as the male lifts its white tipped wings towards the female to encourage her to mate. They can be seen next to any still water, between May and August. The photograph below shows what



they look like but as they never stay still, it was not easy to capture.

They are only about 5mm long, so you need to get really close up to see them properly.

### **Blue Damselflies**

I am seeing a lot of mating activity among the blue damsselflies at present, The males grabs the female behind her head, with claspers at the end of his body, and then they both fly around the pond attached in this way, until they find a good spot to land. She then attaches an egg to some pond plant, just under the water's surface. They carry on doing this for days, if not weeks. These eggs will then hatch out into larvae, and stay in the water until next Spring, where they will crawl up a

plant stem, out of the water, to 'hatch out' into an adult damselfly. Sadly, the adult only lives for a few weeks, it's sole purpose being to find a mate, and reproduce. So the next time you see one of these beauties, just think how lucky you are.

More next month.  
Chris Baines

---

## ***The Victory Hall***

### ***Victory Hall Committee.***

Unfortunately, due to their heavy workload, Ian and Gillian Dixon have stood down. This is a big loss and I will miss their enthusiasm and common sense at meetings. But the good news is that Jackie Ellis has joined and has also taken on the role of secretary. This is very good news as she is a very organised person who has served on many committees over the years. I think it will not be long before she has us all in order!

We are still short of members so if you would be interested in helping out at the hall then please get in touch. We are a very lucky community to have such a super facility.

### ***Regular events***

The Victory Hall use on weekdays is booming and includes:

- ***Badminton***; Monday and Wednesday
- ***Skittles***; Tuesday and Thursday
- ***Short Mat Bowls***; Thursday
- ***Table Tennis***; Friday
- ***Toddlers Group***; Friday

In addition, the walking group, Northlew Amateur Dramatics Society (NADS) and the Parish Council to name but a few also use the Victory Hall.

Come along and join in.

Simon Dancer  
Chair, Victory Hall Committee

### ***Booking a charitable event at the Victory Hall***

Any event must meet all 5 criteria to be granted the booking price of £10.

Criteria to qualify:

1. Any event for which all the profit will go to the named registered charity.
2. Registered charity name & number required when booking and must be on all advertising for the event.

3. The organiser is a parishioner.
  4. It must be a public event open to all. This offer is not for private functions.
  5. The £10 covers the hall and use of the kitchen for drinks only. If food preparation and serving is required, then an additional £15 is essential to cover our extra costs.
- [www.northlewvictoryhall.co.uk](http://www.northlewvictoryhall.co.uk)**
- 

## **Short mat bowls**



The fastest expanding indoor sport in the UK, we now have short mat

bowls in the Victory Hall every Thursday afternoon between 2 pm and 4 pm.

Just £3 per session and no yearly membership required, so why not come along and meet our small band of players.

Have a look at the game and try your hand. There are practice woods available for your use.

For more information please call Mike on 01409 220320 or Norman on 01409 221518.

## **Fancy having a go at skittles or snooker?**



**Friday 13<sup>th</sup> September**  
5 pm to 7.30 pm

The skittles alley will be open for anyone to come and try it out. Young and old alike, this is a game for all. Northlew runs 4 teams through the winter months and new players are always welcomed.

The snooker club will also be open if anyone would like to try snooker too.



and chip supper.

As a bonus the bar will be open, tea and coffee available and, best of all, enjoy a fish

We hope to see you there.



## **Northlew Walking Group**

This was our 3<sup>rd</sup> visit to the wonderful people at Beaworthy Church, St Alban's. Once again the weather behaved itself, with sunny spells, and a lovely breeze. As in previous years, the plan was to walk from Northlew to Beaworthy, enjoy the refreshments laid on by the Church team, and then to transport everyone back to Northlew. Of course, some wanted to walk there and back, some just wanted to walk back, and then others just wanted to come along for the refreshments. With quite a bit of planning, we managed to accommodate everyone.

Joining us on the walk were;  
Holly Dancer with Alfie : walking from Northlew  
Trevor Miller : helping with transport and along for the refreshments  
Pat Carter : walking back from Beaworthy only  
Paulette Bowman with son Paul : along for the refreshments  
Sue Sanders : walking there and back  
Chris & Tricia : helping with transport and Chris walking from Northlew  
Brigid Richardson : walking from Northlew

Susan Jones : walking from Northlew  
Marion Dufty : helping with transport and walking from Northlew  
Pat Richardson helping with transport and walking from Northlew  
Shirley Brookman : walking from Northlew  
Colin & Mags Jarvis : walking from Northlew  
Margaret Conkey : walking from Northlew  
Robin & Dee Gantt : walking from Northlew  
Chris & Angela Baines ; helping with transport and walking from Northlew. Angela cycled back



We walked from Northlew square at 2pm, taking the Crowden road towards Beaworthy. We reached the church at around 3:15pm, where we were greeted by Pam Williams and her helpers. As we rested from our walk, we were

served with cream teas, and lovely cake, with seconds for anyone that wanted them.

Donations collected from the day amounted to £115, which will be put towards the ongoing church restoration.

Thank you to everyone that joined us on this walk, and especially the Beaworthy Church team, for their great hospitality once again. Here's hoping we can do it again next year.

### **Next Walk: No 35**

Next month's walk will take place on the 9<sup>th</sup> August, and as part of the walk we will be treated to a 'walk and talk' around Mark Turley's woodland plantation. He has even offered to make us cups of tea. We will start from Northlew square at 2 pm as usual.

Please come and join us. All welcome.

For information please call Chris Baines on 01409 221362

-----

## **Theatre Highlights**



**Theatre Royal @  
Plymouth**

Box Office 01752  
267222

### **23<sup>th</sup> July – 3<sup>rd</sup> Aug**

Calendar Girls – the musical

### **6<sup>th</sup> Aug – 17<sup>th</sup> Aug**

Motown – the musical

### **21<sup>st</sup> Aug – 31<sup>st</sup> Aug**

The Bodyguard (Alexandra Burke)

### **2<sup>nd</sup> Sept – 7<sup>th</sup> Sept**

Buddy – The Buddy Holly story

### **9<sup>th</sup> Sept – 14<sup>th</sup> Sept**

On Your Feet (Emilio & Gloria Estefan story)

### **16<sup>th</sup> Sept – 21<sup>st</sup> Sept**

The Entertainer (with Shane Richie)

### **30<sup>th</sup> Sept – 5<sup>th</sup> Oct**

The Girl on the Train

### **17<sup>th</sup> Oct – 19<sup>th</sup> Oct & 15<sup>th</sup> Apr –**

### **18<sup>th</sup> Apr (2020)**

Welsh National Opera

More on the website

[www.theatreroyal.com](http://www.theatreroyal.com)

**Northcott @ Exeter**  
Box Office 01392 726363  
[www.exeternorthcott.co.uk](http://www.exeternorthcott.co.uk)

**1<sup>st</sup> Oct – 5<sup>th</sup> Oct**

Little Miss Sunshine – musical

**Sat 12<sup>th</sup> Oct**

Fisherman's Friends

**12<sup>th</sup> November – 16<sup>th</sup> November**

English Touring Opera

**30<sup>th</sup> Nov – 5<sup>th</sup> Jan 20**

Booking now for pantomime

Beauty & the Beast

More details from Martin Perry  
01409 221376 and possible free  
lifts!

-----

## **HOF Gallery and Cottage**



The  
HOF  
Gallery  
is a small  
space

devoted to all things arts & crafty.  
The gallery also has a selection of  
fine ceramics, paintings, prints,  
locally crafted sculpted & hanging  
feltwork. A 'rustic' framing service  
is also available.

The studio opens most weekends  
10am - 6pm and bank holidays

## **Play Group for Grown ups**

*We don't stop playing because we  
grow old, we grow old because we  
stop playing!*

Join us in the Methodist Chapel  
rooms on the on the first Tuesday  
and third Thursday of the month  
from 2:00 pm – 4:00 pm. We play  
cards, do board games and jigsaws,  
drink tea and eat biscuits for £1.50.  
All are welcome

If you need more information or to  
arrange transport please call Chris  
Scadeng on 01409 221797

**There is no playgroup in August**

September: 3<sup>rd</sup> and 19<sup>th</sup>  
October: 1<sup>st</sup> and 17<sup>th</sup>  
November: 5<sup>th</sup> and 21<sup>st</sup>  
December: 3<sup>rd</sup> and 19<sup>th</sup>

-----

## **Fairy neighbours for the Northlew Gnomes!**



The St Thomas's  
Company of  
Mowers have  
noticed that some  
fairies have  
converted a hole  
at the base of a  
lime tree into a

very comfortable looking home.  
We hope that everyone in the village will feel as honoured as we do and will make the fairies welcome!

-----

## ***Marathon walk for charity. Saturday 3<sup>rd</sup> August***

If your reading this after the 3<sup>rd</sup> of August then you'll notice the bunch of people limping round the village and the annual up turn of blister plaster sales.... if your reading this before please come along and join in the fun fun fun.

### ***The route and approximate timings***

Right so the route and very approximate timings are:  
Leave Northlew 6:15 am. We're organising a coach which shouldn't cost more than a burger and chips.

Start at Barnstable station 7:30 am  
Bideford station 8.5 miles 10:30 am  
Great Torrington, 14 miles & first stop at the Puffing Billy 12:30 pm  
Petrockstowe, 23 miles & The Larrels 01837 810578 4:00 pm  
Sheepwash, 26 miles & The New Inn 6:00 pm  
Highampton, 27.5 miles & The Golden Inn 7:00 pm  
Northlew, more than 27.5 Green Dragon 8:30 pm

You can join in for any distance beginning middle or end, it's so good to see people and you have to take part to get your medal. It's not just walking mind, we'll also be picking up rubbish and generally making the cyclists day more difficult on the Tarka trail.

Then we also have helpers driving around the area picking up people and dogs and carrying sandwiches & cakes and drinks and sympathy and encouragement & any help from a bag of sweets to helping with the logistics is gratefully accepted please get in touch.

There is also a limited number of 'Something to look forward to' T-shirts for sale at £10, that's the charity we're walking in aid of and we also have a giving page <https://www.goldengiving.com/fundraising/30milehike> and will have a fund raising bucket in the Green Dragon and shop after the walk.

Right need to get on as need to get training..... deep breath.....

Keep walking!

For more information please contact Tim Williams 01409 221754

## **Badminton Club**

The club has been running now for just under 3 years, and in that time players have come and gone. Up until recently, we have managed to make up teams of 4 players for Monday's and Wednesdays, between 5pm and 7pm. We chose these evenings, so that we don't clash with the skittles leagues in the winter months.



Unfortunately, for various reasons, we are struggling to fill the slots on both

evenings, and sometimes can only manage a single session on the Monday or Wednesday.

Our emphasis is to have fun, and not to take the game too seriously, although it's always good to win. We don't play in a league, and don't expect players to be experts. Any age or sex are accepted, although children need to be old enough to not need supervision. If you have your own racket, that's great, but we do have spares in the hall.

If you think you would like to give it a try, even if the times don't suit

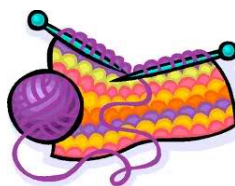
you, then please give me a call, or send an email.

Thanks

Chris Baines :  
chrisbaines55@talktalk.net or  
01409221362

-----

## **Knit and Knatter**



The Knit and Knatter group are knitting and crocheting for good causes and

everyone is welcome to join us! We meet in the Methodist Church every 2<sup>nd</sup> and 4<sup>th</sup> Wednesday of the month from 2:30 pm - 4:00 pm. If you have any spare wool that you can donate to support the Knit and Knatter fundraising activities, please let me know and I will arrange to collect it. Your help is very much appreciated.

For more information or to donate wool please call Eunice Peck on 01409 221187

## ***Member of Parliament for Northlew***

Mel Stride MP  
House of Commons  
London  
SW1A 0AA  
Tel: 020 7219 7037

-----

## ***Parish Council***

Sue Main is the new clerk to the Parish Council. Sue has extensive administrative experience gained in senior office management roles throughout her career in financial services. Sue's contact details can be found on page 24.

### ***Parish Council meetings***

Parish council meetings are usually held at 7:30 pm on the third Monday of each month in the main hall of the Victory Hall.

At 7:30 pm prior to the start of the formal meeting, there will be a public session (if required) which, at the chair's discretion may last up to 15 minutes, to enable members of the public to ask questions of and make comment to the council. We request that notice of intent to ask questions/make comment be made to the clerk by the Friday prior to the date of the meeting. Questions not answered at this

meeting will be answered in writing to the person asking the question or may appear as an agenda item for the next appropriate parish council or committee meeting. Members of the public are asked to restrict their comments and/or questions to three minutes. This section is not part of the formal meeting of the council.

Any member of the parish can attend the formal part of the meeting but may not contribute to it unless specifically invited by the chair.

All parish councillors and the clerk have parish council email addresses found on page 24. Please use these email addresses, not their private email addresses, for all matters relating to the parish council or parish. Thank you

### ***Minutes***

The minutes of last month's council meeting can be seen on the parish notice board.

Please contact Sue Main for further information or if you would like to raise a topic at the public session of the parish council meeting. Sue can be contacted on 07956 312047

[clerk@northlewparishcouncil.org.uk](mailto:clerk@northlewparishcouncil.org.uk)

## ***Parish Council Website***

The Parish Council website has now been launched and can be found by copying and pasting the following link into your search engine.

<http://www.northlewparishcouncil.org.uk/>.

The website is currently in a relatively basic format and is an ongoing project. The plan is to develop the scope of the website over time. So please bear with us!

If you have any comments and/or suggestions, or if you are organizing an event in the parish that you would like to be advertised on the website, then please contact Sue Main at  
clerk@northlewparishcouncil.org.uk

## Parish Council Emails

<b>Councillors &amp; clerk</b>	Councillors
Joanna Wilson Chair	<a href="mailto:chair@northlewparishcouncil.org.uk">chair@northlewparishcouncil.org.uk</a>
Celia Rundle Vice Chair	<a href="mailto:crundle@northlewparishcouncil.org.uk">crundle@northlewparishcouncil.org.uk</a>
Bryan Dufty	<a href="mailto:bdufty@northlewparishcouncil.org.uk">bdufty@northlewparishcouncil.org.uk</a>
Mark Rundle	<a href="mailto:mrundle@northlewparishcouncil.org.uk">mrundle@northlewparishcouncil.org.uk</a>
Terry Hatt	<a href="mailto:thatt@northlewparishcouncil.org.uk">thatt@northlewparishcouncil.org.uk</a>
Kate Hawkins	<a href="mailto:khawkins@northlewparishcouncil.org.uk">khawkins@northlewparishcouncil.org.uk</a>
Holly Dancer	<a href="mailto:hdancer@northlewparishcouncil.org.uk">hdancer@northlewparishcouncil.org.uk</a>
Steve Smith	<a href="mailto:ssmith@northlewparishcouncil.org.uk">ssmith@northlewparishcouncil.org.uk</a>
Steve Shelton	<a href="mailto:sshelton@northlewparishcouncil.org.uk">sshelton@northlewparishcouncil.org.uk</a>
Clerk – Sue Main	<a href="mailto:clerk@northlewparishcouncil.org.uk">clerk@northlewparishcouncil.org.uk</a> Telephone: 07956 312047



## **Okehampton & District Community Transport Group**



Okehampton & District Community Transport Group have been serving the community for 28 years. We cover 274 square miles of rural Devon. We provide accessible, door to door

transport for the frail, elderly, disabled and rurally isolated to access both healthcare and social appointments. We have a Ring and Ride bus service which takes passengers into Okehampton for shopping or to meet friends. We run a Volunteer Car Service for healthcare transport, we have two wheelchair accessible vehicles and also a 15 seat community minibus which we use for lifestyle trips during the week and weekends and is also available to groups and societies. All our fares are subsidised.

If you would like any further information, please ring Sue or Liz on 01837 55000 or 07484 525577

Sue Wonnacott, Co-Ordinator  
Okehampton District Community Transport Group  
Unit 3, Okehampton Business Centre  
Higher Stockley Mead  
Okehampton  
Devon  
EX20 1FJ

[www.odctg.co.uk](http://www.odctg.co.uk)  
<https://www.facebook.com/pages/Okehampton-District-Community-Transport-Group/165867586926940>

## **Advertising in the Northlew News**

If you would like to advertise in the Northlew News please contact Joanna Wilson.

### **Business advertising rates:**

- £2.50 per advert (business card size) per month or £25 per annum
- £5 for half page
- £10 full page

Please note there may be a one-off charge of £15 if your advert needs to be reset by the printers. All cheques to be made payable to The Northlew Parish Council.

### **Items for sale advertising rates:**

- £5 per advert for half page with picture
- £1 per advert (text only) per month



OKEHAMPTON  
DEVON

**Elmfield**  
bed & breakfast

*and great company - just perfect -  
thank you very much."*

*"We came for 2 nights and  
stayed for 4 - do we need to  
say any more?"*

**Bed and breakfast accommodation at Elmfield**

**Prices from £35 per night**

**Extensive breakfast menu**

**Discounts apply for stays of 3 nights or more**

**Contact: Martin on 01409 221376 or 07974 859029**

**[www.elmfield-northlew.co.uk](http://www.elmfield-northlew.co.uk)**



## **J & J SERVICES**

**For all you car repairs and  
servicing under one roof**

Batteries • Tyres • Exhausts • MOT Preparation • Diagnostics  
Repairs to old and new • All makes and models

**Ring John  
for a friendly and efficient service**

**01409 220091 07850 767686**

The Knoll, Northlew, EX20 3BR  
Established 1981



## **J A WILKINS**

**Carpenter & Joiner.**

**All building work undertaken**

**Extensions, alterations, kitchens,  
bedrooms, bathrooms, roofing, etc.**

Little Wigdon  
Station Road  
Northlew

01409 221212  
07890 929184



## **JEANNETTE LAWRENCE**

*Traditional  
Freelance  
Mobile Hairdresser*

**01409 221762**

Steve Lofthouse  
Driving Instructor  
Northlew



## Take Up! Driving

07533 017938

01409 220285

## A.J.L. PLUMBING

**Ashley Long**

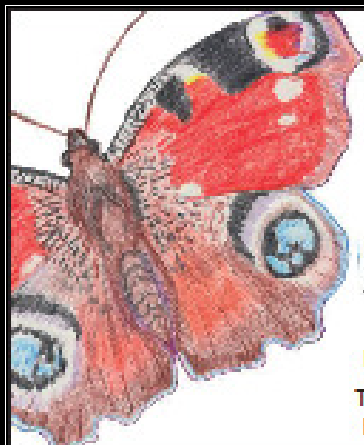
Okehampton Based

Call/Text: 00710 790010

Email: [ajl\\_plumbing@outlook.com](mailto:ajl_plumbing@outlook.com)

Bathrooms ~ Taps ~ Showers

Sinks ~ Radiators ~ No Job Too Small



Joyous  
holistic happiness

Amy Rogers

Reflexology/Massage/Reiki Master

Tel: 01837 871777 / 07952 318382

Email: [info@feelgoodfriends.com](mailto:info@feelgoodfriends.com)



**MB CONSTRUCTION**  
**MARCUS BARRETT**  
 BUILDING CONSTRUCTION

ALL BUILDING WORK UNDERTAKEN  
 NEW BUILDS • EXTENSIONS • RENOVATIONS  
 TILING • KITCHENS & BATHROOMS

FULLY INSURED & FREE ESTIMATES

Merrial Cottage, Station Road  
 Northlew, Okehampton, EX20 3NH

07970 254 964 / 01409 221835  
 meb271166@gmail.com

## **P.S Electrical**



Office :01409220246

Mobile: 07792 163156

enquiries@pselectricians.co.uk

3 The Old Orchard

Northlew

Okehampton

EX20 3NH

Domestic, Commercial, Industrial, Bespoke garden  
 lighting and Agricultural

Part P Approved



## ***For Sale***

### ***Reebok ZR7 Treadmill For Sale.***

Condition is as good as new and any inspection is welcome to confirm this.

Many features a programmes built in and include Calorie Monitor-Heart Rate and Pulse Monitor-Body Fat Analysis etc. etc.

Ideal for walking, jogging or running and has an incline adjustment.

Max. User Weight is rated at 112Kgs

Running speed up to 8 mph

Belt Width 45cms.

Dimensions in flat mode are L162 cm x W 76 cm x L 142 cm.

Will fold away via use of a damper. (as per photo)

£200 or vno



Please call Norman on 01409 221518.

# CBL STOVES

The Showroom, Unit 5  
Red Post, Bude, Cornwall  
EX23 9NW

01288 381852  
carl@cblstoves.co.uk  
www.cblstoves.co.uk



- Stainless Steel twinwall flues
- Chimney Lining
- Iskoern Pumice lining
- Fireplace alterations
- Stove Installations
- Wood, Multifuel, Gas & Electric Traditional & Contemporary Stoves & Fires
- Chimney Rebuilds
- Slate, Granite & Glass Hearths
- Wood & Ceramic beams & surrounds
- Floating Shelves



## Community Contacts

Okehampton Medical Centre	01837 52233
Blakehouse Surgery, Black Torrington	01409 231628
Okeford Vets	01837 52148
North Park Veterinary Group	01837 658777
mydentist, Okehampton	01837 52745
Okehampton Cinema	01837 658586
Inkprint, Okehampton	01837 52937

## **2019 Events at a Glance**

<b>August</b>	<ul style="list-style-type: none"> <li>• <b>Saturday 3<sup>rd</sup> August:</b> Marathon walk</li> <li>• <b>Saturday 17<sup>th</sup> Aug:</b> Treasure hunt &amp; tea church room</li> <li>• <b>Saturday 31<sup>st</sup> August:</b> Ploughman's lunch in the Church Room</li> </ul>
<b>September</b>	<ul style="list-style-type: none"> <li>• <b>Saturday 7<sup>th</sup> September:</b> Northlew and Ashbury Produce and Craft Show</li> <li>• <b>Friday 13<sup>th</sup> September:</b> Skittles and snooker and a fish and chip supper! 7:30 pm The Victory Hall</li> </ul>
<b>October</b>	<ul style="list-style-type: none"> <li>• <b>Sunday 6<sup>th</sup> October:</b> Harvest Festival</li> <li>• <b>Monday 7<sup>th</sup> October:</b> Harvest Supper, Victory Hall</li> <li>• <b>Sunday 13<sup>th</sup> October:</b> Harvest Festival 2:30 pm</li> <li>• <b>Monday 14<sup>th</sup> October:</b> Harvest Festival 7:30 pm</li> <li>• <b>Ashbury Festival of Light:</b> date to be confirmed</li> </ul>
<b>November</b>	<p><b>Friday 1<sup>st</sup> November:</b> Northlew Carnival</p> <ul style="list-style-type: none"> <li>• <b>Friday 15<sup>th</sup> November:</b> Concert by Country Rich and the 3 J's in the Victory Hall</li> <li>• <b>Saturday 23<sup>rd</sup> November:</b> Bring and Buy Christmas Fair in the Victory Hall</li> </ul>
<b>December</b>	<ul style="list-style-type: none"> <li>• <b>Christmas Fayre in aid of PTFA;</b> date to be confirmed (may be in November)</li> <li>• <b>Christmas services;</b> details later</li> </ul>

## **2020 Events at a Glance**

<b>January</b>	<ul style="list-style-type: none"> <li>• <b>Tuesday 7<sup>th</sup> January:</b> All pupils return</li> </ul>
<b>February</b>	<ul style="list-style-type: none"> <li>• <b>Monday 17<sup>th</sup> February – Friday 21<sup>st</sup> February (inclusive):</b> Half- term</li> </ul>
<b>March</b>	<ul style="list-style-type: none"> <li>• <b>Monday 30<sup>th</sup> March – Monday 13<sup>th</sup> April (inclusive):</b> Easter holidays</li> </ul>





## **Autumn Term 2019**

Monday 2<sup>nd</sup> September: Non-Pupil Day

Tuesday 3<sup>rd</sup> September: Non-Pupil Day

**Wednesday 4<sup>th</sup> September: All Pupils Return**

**Half Term:** Monday 21<sup>st</sup> October to Friday 25<sup>th</sup> October inclusive

**Monday 28<sup>th</sup> October: All pupils return**

Friday 20<sup>th</sup> December Last day of term

**Christmas Break:** Monday 23<sup>rd</sup> December 2019 to Friday 3<sup>rd</sup> January 2020 Inclusive

## **Spring Term 2020**

Monday 6<sup>th</sup> January: Non-Pupil Day

**Tuesday 7<sup>th</sup> January: All pupils return**

**Half Term:** Monday: 17<sup>th</sup> February – Friday 21<sup>st</sup> February inclusive

**Monday 24<sup>th</sup> February: All pupils return**

Friday 27<sup>th</sup> March: Last day of term

**Easter holidays:** Monday 30<sup>th</sup> March – Monday 13<sup>th</sup> April inclusive

## **Summer Term 2020**

**Tuesday 14<sup>th</sup> April: All pupils return**

Monday 4<sup>th</sup> May: May bank holiday

**Half Term:** Monday 25<sup>th</sup> May – Friday 29<sup>th</sup> May inclusive

**Monday 1<sup>st</sup> June: All pupils return**

Monday 20<sup>th</sup> July: Non-pupil day

Tuesday 21<sup>st</sup> July: Non-pupil day



Okehampton Library,  
4 North Street,  
Okehampton  
EX20 1AR

01837 52805

## ***Events at Okehampton Library***

### **Saturday 13th July - Saturday 7<sup>th</sup> September**

#### ***Space Chase, Summer Reading Challenge 2019***

This year's theme is 'Space Chase'. Each child who reads 6 library books to collect the special stickers and complete the Space Chase Summer Reading Challenge by 7<sup>th</sup> September will be given one free ticket for entry to the Milky Way Adventure Park at Clovelly, a certificate and a medal, and be able to have a photo taken in our 'flying saucer' and add a space rocket to our finishers board.

Free event, no booking necessary.

The Milky Way Adventure Park offers an out of this world adventure for the whole family, with rides, shows and play designed to delight all ages. New for 2019 is Ziggy's Blast Quest where visitors are invited to pilot top-of-the-range Cyber Scooters, and as they ride, use powerful Blasteroid Lasers to shoot asteroids and meteors before they enter Earth's atmosphere. The aim is to hit as many as possible before returning to Earth Base Zero – and of course, to beat your friends' and family members' scores! Located near Clovelly in North Devon.

[www.themilkyway.co.uk](http://www.themilkyway.co.uk)

### **Wednesday 7<sup>th</sup> August 14:30-15:30 – 'Space Cats' by Boo to a Goose Theatre**

Two curious kittens, Gumdrop and Spider, discover a spaceship while exploring Professor Agena B. Armstrong's secret laboratory... IGNITION SEQUENCE START! 3, 2, 1...

Space Cats is an interactive and multi-sensory show for children aged 0-8 years and their families.

Tickets in advance £3.50 per child over 6 months (adults free)

**Wednesday 14<sup>th</sup> August 14:00-15:00 or 15:15- 16:15 – ‘Alien Animals’ Encounter from Really Wild Learning**

An amazing ‘Animal Aliens’ encounter exploring how weird and wonderful creatures are and their adaptations that allow them to survive in a range of habitats. Magnifying glasses at the ready we can explore which animals would be best suited to space and why! Science meets fantasy fiction. Did you know that geckos and newts have all been on space missions and demonstrate an ability to survive at zero gravity!

Suitable for children aged 3+ Tickets in advance £3.50 per child (adults free)

**Friday 23<sup>rd</sup> August 14:00-15:00 – Space Shadow Lanterns**

Design and create your own space-themed shadow lantern complete with electric tea light. Perfect for bedtime.

Suitable for ages 8+ Tickets £1 per child, bookings in advance

**Tuesday 27<sup>th</sup> August 14:00-14:30 & 15:00 15:30 – Space Lego Animation Workshop**

Create your own animated space story using our Lego.

You will need to download the Aardman ‘Animate it!’ app from the App Store onto a tablet or smartphone that has a camera. Please bring your device with you to make the animation.

These are 30 minute taster sessions - look out for more animation in September.

Suitable for ages 7+

Free event, donations welcome. Please book in advance as spaces are limited.

**Wednesday 18<sup>th</sup> September 16:00-17:00 – Paddle Boat Theatre Company present: Clare Hollingworth and the scoop of the century**

An interactive family show – straight from the front line! Telling the tale of fearless journalist Clare Hollingworth. From the busy newspaper offices in London to the frontline during World War II, Clare’s adventures tell the remarkable true story of one of the most important writers of our

time. The show will be followed by a free storytelling workshop for all the family! The workshop will last approximately 1 hour and we welcome anyone to stay along after the show to join in. Recommended age 4+ Tickets available from Okehampton Library £4 per person or through the Eventbrite link (booking fee payable)

### **Wednesday 11<sup>th</sup> & 18<sup>th</sup> September 10:00-12:30 – Free Computer Lessons.** This course runs over 2 sessions

Are you confused by computers? Sign up to our free IT sessions for beginners! The sessions will be delivered by Elite Training South West Free course, booking essential

## **Regular activities**

### ***Adults***

#### **Tuesdays 1:30 pm – 2:30 pm, Knit & Natter**

Bring along your knitting, stitching, crochet or other portable project, for a chat with like-minded crafters. Tea and coffee available at 50p a cup.

### ***Children and young people***

**Tuesdays 10 am - 10:30 am – Bounce and Rhyme** aimed at over 1 year olds. Free, no booking necessary

**Tuesdays 11 am - 11:30 am - Bounce and Rhyme** aimed at under 1 year olds. Free, no booking necessary

**1<sup>st</sup> Tuesday of the month 3:45 pm – 4:45 pm** – Bookworms book club for ages 7 – 11 (except Aug/Sept) . Free, no booking necessary

**Wednesdays 9:30 am – 10:15 am, Duplo Builders and Storytime**

For ages 0-5. Free, no booking necessary

**2nd Thursday of each month 3:45 pm - 4:45 pm, Bunala Book Club for ages 12+**

Free -ask staff for further details

**Saturdays 10:30 am – 11:30 am Lego Builders**

For ages 5+ Free, no booking necessary

**Book Track**

For ages 6+ during library opening hours. Free, ask staff for further details

Children under 8 must be accompanied to all events by a responsible adult.

See our website or call us

**Opening Hours**

Monday	09:00-17:00
Tuesday	09:00-18:00
Wednesday	09:00-13:00
Thursday	09:00-17:00
Friday	09:00-18:00
Saturday	09:00-13:00



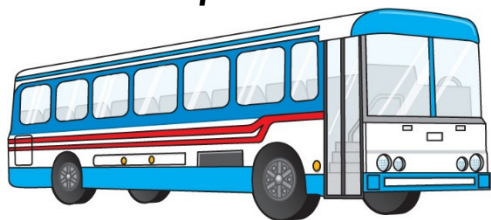
@OkehamptonLib



facebook.com/OkehamptonLibrary

[okehampton.library@librariesunlimited.org.uk](mailto:okehampton.library@librariesunlimited.org.uk)

## **Bus Routes from Northlew**



Every Monday, Thursday and Saturday there is a morning service to Okehampton. The bus will be parked for 2-3 hours outside Waitrose where you can leave your shopping whilst you visit

Okehampton. There is also a service to Bideford which is convenient for Morrisons.

**Changes to the Thursday service:** Please note that the Thursday 630 service has changed so it now goes to Okehampton via Hatherleigh. It still leaves the square at 9:45 am.



Also, by contacting the office you can book our services to Crediton or Barnstaple on Tuesdays, to Trago Mills and Newton Abbot on Wednesdays and Exeter or Tavistock on Fridays. And in the school holidays we also have services to Barnstaple (Tuesdays) Holsworthy (Wednesdays) Tavistock (Fridays) from Northlew.

## **With 10 buses per week Northlew has excellent public transport for a village of our size**

These services mainly use scenic routes ideal for showing off the area to friends that may be visiting. Bus passes are accepted at all times and if you are not lucky enough to have one then the fares are low. Let the bus take the strain out of driving and no parking charges to pay or spaces to find! Most importantly, if you live on the route then the bus stop is your front door.

From Easter day trips from the village commence for the summer as outlined on the back page and there will also be 3 short break holidays this year leaving from the village. For more information please contact Libby

# Carmel Coaches Excursions for 2019



Date and venue	Cost
<b>21<sup>st</sup> – 25<sup>th</sup> October:</b> Gunton Hall Coastal Village near Lowestoft	£325
<b>2<sup>nd</sup> November:</b> Bridgwater Carnival	£14
<b>18<sup>th</sup> – 22<sup>nd</sup> November:</b> Turkey and Tinsel at Bembridge, Isle of Wight	£350
<b>23<sup>rd</sup> November:</b> Cardiff Christmas shopping	£20
<b>30<sup>th</sup> November:</b> Cribbs Causeway or Cabot Circus, Bristol	£17

**For more information or to book your seat  
please call Libby 01409 221237**