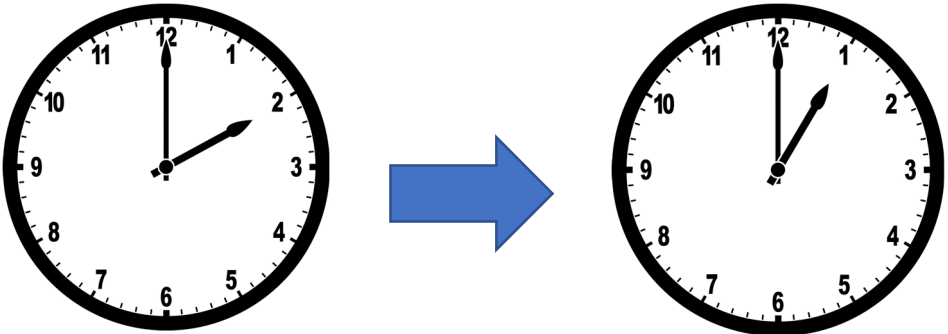


NORTHLEW NEWS

October 2019

[.Northlewnews@gmail.com](mailto:Northlewnews@gmail.com)



The clocks go back 1 hour at 2 am on Sunday 27th October

Source: <https://www.gov.uk/when-do-the-clocks-change>

Your Parish Councillors

Chair: Joanna Wilson: 01409 220254	Vice Chair: Celia Rundle: 07432 512499
Mark Rundle: 01837 53314	Bryan Dufty: 01837 871256
Holly Dancer: 01409 221881	Terry Hatt: 07811 383397
Steve Shelton: 07920 884888	Steve Smith: 01409 221677
Vacancy	Clerk: Sue Main: 07956 312047
Cllr James McInnes (Devon County Council): 01837 861364	Cllr Patrick Kimber (West Devon Borough Council) 01837 810057

Note from the Editor

The Parish Council website can be found at

<http://www.northlewparishcouncil.org.uk/>.

This is an ongoing project and any suggestions on how we can make it more useful would be much appreciated. The minutes of the parish council meetings, back copies of the Northlew News, as well as other information can be found on the website and we have plans to develop it further. Thank you for the positive feedback we have received to date about the website.

Thank you to everyone who contributes to the Northlew News whether on an ad hoc or regular basis. The deadline for copy for November's edition is 20th October. If you would like to receive an electronic copy of the Northlew News then please email at northlewnews@gmail.com.

Best wishes



St Thomas of Canterbury Parish Church

Services

6th October

6:30 pm Harvest songs of praise with the band

13th October

9:30 am Morning prayer (Sandy Flack)

20th October

9:30 am Holy Communion (Rev Leigh Winsbury)

27th October

9:30 am Family service (Rev Leigh Winsbury)

Harvest Festival

We will be decorating the church for the Harvest Festival on Saturday 5th October. Gifts of vegetables, fruit, flowers, jams, chutneys and so on will be very welcome, in fact anything to do with harvest – thank you! We live in a fertile, well farmed, land for which we thank God, and the farmers! So please do come and join us for our songs of praise on 6th October where we will sing the well loved harvest hymns accompanied by Northlew Silver Band. Harvest supper is the

following day and there is a list in the church room, so please just add your name and pay on the door or alternatively to book please call 01409 221036. Everyone welcome.

Book table

Just a reminder; the nights are drawing in so now is the time to stock up your book shelf. There is a good selection of books in the church room, mostly novels, but you never know what you might find! Donations, however small, go to various causes over the past few years such as Shelterbox and the Hospice. The church room is open during the day so please go in and help yourself – thank you.

Collecting for Okehampton Food Bank

There is a box for donations to the Okehampton food bank at the back of the church with a list of non-perishable goods that are needed such as:

- Tinned food: tomatoes, beans, tuna etc.
- Packet foods: rice, pasta, couscous, cereals, porridge oats, tea and coffee.
- Cleaning products and toiletries.

Thank you.

Northlew Methodist Church

Services

6th October

9:30 am Mrs Bridget Down

13th October

2:30 pm Mr John Hill – Harvest Festival

20th October

9:30 am Rev Jerry Cook

27th October

9:30 am Rev Irving Penberthy

Harvest Festival

Sunday 13th October

2:30 pm Harvest Festival Service

Preacher: Mr John Hill

Monday 14th October

7:15pm Harvest Thanksgiving

Preacher: Mr Andy Jerrard

Supper and sale – everyone welcome to join with us at this time of thanksgiving

Country and western evening Friday 15th November



7:30 pm
Northlew
Victory
Hall

Admission £8 including refreshments. Please ring Dorothy 01409 221782 or Bet 01409 221003.

Everyone welcome – all proceeds for Northlew Methodist Church

50/50 Shop and coffee morning

Saturday 26th October

10 am – 12 noon. Cake and savoury stall, coffee morning and 50/50 shop.

All welcome

Women's Guild and Fellowship

Wednesday 2nd October

2:30 pm

Women's meeting in the Methodist Hall. The speaker is Mrs Jane Wonnacott.

Northlew Stores C I C.

Meal deal

Every Friday is “meal deal” Friday, a bargain for £3.50 (includes; sandwich, drink, crisps, cake & fruit), ideal if you are going out for the day, or pick up for your lunch on the way to work we are open from 7.30 on Fridays.

Fresh fruit, veg and flowers

Fridays is also fresh fruit, veg & flower day, so pop along and see what's available, get something for the weekend.

Flyers for your local event

If you are an organisation which is holding a local event and would like a flyer to go in the Okehampton Times, please speak to Paula as we are happy to pop a leaflet in each paper – free! It must be an event which is being held in the parish of Northlew & Ashbury.

Food bank

We now have a collection point for the local foodbank, so if you have any items you would like to donate please pop them in the box under the reserved papers. There is a list of items needed on the notice board outside the Church room.

Newspapers and magazines

If you would like to order newspapers or magazines please do so, we get commission on sold papers and magazines and every little helps. The newspaper delivery costs just under £50.00 each week.

Changes to our opening hours

A reminder, with the nights' drawing in and temperatures dropping we will, from the 1st October, be reverting to winter opening. We don't have enough volunteers to enable the opening hours to be extended, also it gets cold!

Winter opening hours

The winter opening hours which start on 1st October are shown below. Please be aware that on rare occasions we may not be able to fully cover the hours and may have to close early – we will give notice where possible.

Day	am	pm
Mon	8 – 12	3 – 5
Tues	8 – 12	3 – 5
Wed	8 – 12	3 – 5
Thurs	8 – 12	3 – 5
Fri	7:30 – 12	3 – 5
Sat	9 – 12	Closed
Sun	9 – 12	Closed

Bank Holidays: 9:00 am - Noon

Christmas: Closed

Boxing Day: Closed

New Year's Day: Closed

We need your help!

We are still looking for volunteers. If you are unsure, pop in and have a chat with Paula, who will arrange a no obligation taster session! For more information or to join the volunteers please contact:

Paula 07805 427006
or Dan: 01409 221228

Email: Northlewshop@gmail.com,

Facebook: @northlewshop

Northlew Post Office



® The post office is open from 9:30 am to 12 noon in

the Church Room on Monday and Friday mornings.

Northlew Village Square Telephone Box

Phase 1 (the outside) complete!

The preservation of the outside of the village telephone box was completed during the sunny days of mid-September and now reflects its proud heritage. The kiosk is now sound and protected from the winter weather and any further deterioration.

As one local resident exclaimed “it hasn’t looked this good in many a year!”. Many locals reflected on time spent in the box when home phones were rare and it made us want to find out more about the kiosk - especially as no one was quite sure when it was originally installed.

A little bit of history

So, the historical records show that the village phone box is a K6 style box and was installed sometime between 1936 and 1952. This style of box was designed to commemorate the Silver Jubilee of George V in 1935, rolled out across England from 1936 with 35,000 in operation by 1940. These boxes were smaller, more streamlined and less ornate than the original kiosks. The glazing

pattern was altered to create better visibility and a more ‘modern’ appeal. The first original K1 telephone box was erected in the U.K. in 1921 and production was increased in 1924 with the K2 box designed by Sir Giles Gilbert Scott. The total number of kiosks increased to 92,000 by 1992 and then declined. By 2022, with planned closures there are expected to be fewer than 20,000 active boxes left.

Which crown?

The village box bears the original Tudor crown, which was only used until 1952 and altered in 1953 when Queen Elizabeth II decided to replace it with the St Edwards Crown. The crowns were originally painted the same red as the telephone box and only replaced with gold in the 1990s.

Life after BT.....

The box in Northlew was decommissioned by BT in 2008 and by the end of 2009 Northlew Community Broadband was providing calls for 1p a minute with a minimum 20p spend - and hit the press for the cheapest public phone calls in the U.K.

It is believed that 2009 also marked the last time that the box was

painted - but if you know differently, do tell us. It certainly had at least a dozen layers of paint in places on the outside.

Thank you

The K6 phone box is recognised as a British icon and we are delighted the village kiosk has now been partially restored to its former glory. Many thanks to Holly Dancer and Jude Jones for time, effort and good humour in persevering with this task. The future of the inside of the box needs further investigation and discussion and will be undertaken in 2020.

To conclude, if this has sparked any memories or you can narrow down the year of the installation any further, please do let us know - we would love to hear your stories!

Before the restoration



After the restoration!



Daisy Chain Group



The dates for the meetings are as follows:

Tuesday 8th October 7 pm
Tuesday 12th November 7 pm
Tuesday 10th December 7 pm

Sessions are £2 towards our kitty and held in the Church Room. We are a friendly group, welcome to all.

For more information about each meeting please call Gina Farrow
01409 221238

A new independent bookshop in Okehampton



15 Station
Road
Okehampton
EX20 1DJ

Tel: 01837
657 563

Email:

info@dogberryandfinch.co.uk

Website:

www.dogberryandfinch.co.uk

Facebook: @dogberryandfinch

Twitter: @DogberryFinch

Dogberry & Finch Books opened in Okehampton on 24th August 2019. A general bookshop, it sells hand-picked new fiction and non-fiction for children, young people and adults as well as local interest titles and maps. Customers can request and order any title not in stock for next day collection or delivery.

The owner, Kate McCloskey, has a background in academia, advertising, and the social sector. She runs Dogberry & Finch Books with her partner, Linus. Opening a bookshop in her hometown is the realisation of a longstanding dream. See the website (above) for more for more information.

Independent bookshops on the increase

Kate is a firm believer that books get to the heart of things. They're important; they change lives. The Booksellers Association (BA) has shown that despite general economic gloom, the number of independent bookshops on UK high streets has grown for the second year running. The opening of Okehampton's first independent bookshop in decades is a potent good news indicator for Okehampton's retail, tourist and cultural landscape.

Opening times

Dogberry & Finch Books currently open the shop 4.5 days a week; opening hours may increase once the business is established and they take on staff.

Monday: 9:00 am – 5:00 pm

Tuesday: 9:00 am – 5:00 pm

Wednesday: Closed

Thursday: 9:00 am – 5:00 pm

Friday: 1:00 pm – 5:00 pm

Saturday: 9:00 am – 5:00 pm

Sunday: Closed

Kate is particularly interested in aesthetics of books (cover design, form, illustrations) and in the way this interacts with our reading experience. She says, "To hold a book in your hands and read is a

sensory experience. A book is an aesthetic work of art in its own right as well as an example of fictional or literary artistry. Those books we read as children stay in our heads as images as well as stories.”

This fascination can be seen in the emphasis on ‘face-out’ display in the bookshop, and in the careful choice and curation of titles. There is a section dedicated to manga (Japanese comics) and graphic novels for young adults, and the shop also sells prints of classic children’s book illustrations.

Art displays

Above the bookshelves is display space for showcasing and selling paintings by some of the region’s most talented artists.

Currently on display is work by local fine artist Danny Holmes-Adams. Exeter pastel artist Rebecca de Menonca will display her work from 29th October.

Working with the community

Kate is excited about the opportunity to work with schools and local organisations to boost literacy and enjoyment of books and art. She has been overwhelmed by the support and positive

response of local people to getting their own independent bookshop, and is keen to work alongside fellow retailers to promote Okehampton’s flourishing High Street and develop a ‘joined-up’ marketing strategy for the town.

Plans for the future include collaborating with youth leaders to develop events for local young adults and offering large-print books alongside social/reading events for older members of the community.

Upcoming events at Dogberry & Finch

Thursday 3rd October 7-8 pm Poetry Karaoke

An evening in the company of favourite and new friends, sharing favourite and new poems.

Saturday 5th October

National Bookshop Day. Come and support your local, independent bookshop, and enjoy freebies, refreshments, competitions and copious book talk!

Sunday 13th October Festival of Culture, Arts, Film & Music at Toast Coffee House

Dogberry & Finch will be hosting a literature/poetry event: details and time to be confirmed.

Tuesday 22nd October 7pm

Frankenstein Talk by the Prof of Goth
Talk on Frankenstein by accomplished public speaker, Prof. Nick Groom, Professor of English at Exeter University.

Dr Groom will be available after the talk for signings of his new edition of Mary Shelley's classic and Dogberry & Finch will provide complimentary refreshments.

<https://global.oup.com/academic/product/frankenstein-9780198814047?cc=gb&lang=en&>

Sunday 27th October (time to be confirmed)

Baring Gould Folk Weekend event of talk and music

Dr Todd Gray's new book on Widdecombe Fair 'Uncle Tom Cobley and All' will be the focus of this event, in collaboration with Wren Music, whose professional singers will provide live music in the bookshop.

Tuesday 29th October (time to be confirmed)

Artist demonstration by Rebecca de Mendonca

Acclaimed pastel artist, Rebecca de Mendonca will be at Dogberry & Finch Books all day with her easel, giving a drawing demonstration & signing copies of her new book, 'Pastels for the Absolute Beginner'.

Northlew Silver Band Carnival



Friday 1st November

Plan your fancy dress now!

For more information about the fancy dress parade please contact Martin Perry 01409 221376

Gardening tips for the autumn and winter months



This is a bit of an end of season omnibus to take you through till the beginning of next year.

Early autumn jobs

Early autumn jobs include planting out wallflowers, forget me nots/any hardy annuals.

If you have bareroot wallflowers, always plant them deep and firm them well in; being related to brassicas, they too appreciate being protected from windrock.

Winter pots can be planted up with 3 layers of bulbs (largest bulbs furthest down the pot). Or you can do separate pots with a mix of winter pansies/violas, primulas, trailing ivies, cyclamen or winter heathers. As a change from trailing ivy, I'm using a variety of Ajuga reptans called "Burgundy Glow", which is variegated, pale green and white with pink tinged younger leaves. The flowers are denim blue and very attractive to insects. Ajuga

(Bugle) is in fact, a perennial evergreen that is often used as ground cover in borders. I've planted it up with Muscari (grape hyacinth) "White Magic" and "Pink Sunrise".

Garlic and onions

Get garlic cloves in if you haven't already and plant over-wintering Japanese onion sets. If you can, get the more expensive heat treated sets as these are less likely to bolt if the weather turns dry in May/early June as it did this year. Red onions are also more likely to bolt or become bull necked than white varieties.

Making leaf litter

Leaves are already starting to fall. If you want to collect them to make leaf litter, try stuffing them loosely into mesh nets like those used for bulk onions. The leaves will rot down much more quickly than in dustbin bags or an open bin (they tend to become compacted and dry in these).

Preventing the spread of mould

Keep checking on any pelargoniums/tender perennials that have been brought inside, for botrytis (fuzzy grey mould). This can spread like wildfire to other plants, so remove any infected

leaves or stems and don't leave any stubs as these are particularly susceptible to rot and mould.

For the benefit of wildlife

Traditional garden advice has always been to cut perennial herbaceous plants down in late autumn to make the garden look neat. To an extent, I still do this - smaller mound forming plants such as alchemilla mollis, hardy geranium and astrantia all benefit from a final haircut. Increasingly though, I'm leaving certain plants alone for the benefit of wildlife. Over the years, I've discovered dormice hibernating in nests under the leaves of crocosmia (montbretia) and ladybirds sheltering in the hollow stems of echinops and tall acanthus grasses. So, I leave these types of plants alone until early spring and new growth starts again.

Bulb planting, dividing perennials and mulching

Before mulching (probably the biggest autumn job), make sure all your bulb planting is done and any digging up and dividing of large clumps of perennials. Once the borders are ready, mulch thickly (at least 3-4" deep) with homemade compost, well rotted manure or (my preference) green waste soil conditioner available in bulk. Being

generous with mulch pays huge dividends..... the difference in the following season is remarkable. A thin mulch won't suppress annual weeds or keep in moisture. Make sure the soil isn't frozen or too dry before you apply the mulch.

Dahlias and cannas

Wait for the first frosts to blacken dahlias and cannas before cutting them down and lifting, prior to storing in a frost-free place. I've actually left cannas in the ground all winter, mulching heavily with straw and found that they come up much more strongly the following spring, than the ones that were lifted as 'insurance'.

Happy gardening for the rest of 2019.

Harriet

Many thanks to Harriet for all her gardening tips this year. She will be back with more gardening tips in February 2020

Our recycling scheme is being improved!



***YOUR HOUSEHOLD
RECYCLING COLLECTION IS CHANGING
MONDAY 2ND DECEMBER***

***Learn more about it on:
Monday 21st October
6:30 pm
Victory Hall***

There are going to be some exciting changes to our recycling scheme that mean we will be able to recycle more of our waste at the kerbside. The parish council has invited a speaker from West Devon Borough Council (WDBC) to the Victory Hall to be on hand to talk about the new recycling scheme. Please come along to hear about the changes yourself and clarify any queries you may have directly with a member of WDBC.

Everyone welcome

Below is a news release from WDBC (26th September).

Become a Super Recycler and Recycle More for West Devon

From December this year, West Devon Borough Council will be introducing an improved recycling service with its partner FCC Environment, so that every household can recycle more.

Recycling more and throwing away less reduces the impact on the environment because less energy is used producing new materials and we can make the best use of our resources.

Earlier this year West Devon Borough Council joined many other councils and Central Government, in declaring a climate change and biodiversity emergency.

While tackling the global issues seems an overwhelming task, recycling is the easiest way for every household to do their bit.

There are many residents in West Devon who already recycle all of the items that are currently collected. Now West Devon Borough Council wants to help

residents become Super Recyclers and recycle even more every single week.

From December, plastic packaging, such as yoghurt pots, margarine tubs, meat trays and fruit punnets can be recycled at the kerbside. Residents will also be able to recycle food and drinks cartons, printer cartridges and aluminium foil and trays.

To enable residents to do this, each household will be issued with a reusable sack to put out alongside their two existing boxes and food caddy. It will have a weighted base, so it doesn't blow away, and a lid to keep all of the contents inside.

Cllr Caroline Mott, West Devon Borough Council's Lead Member for Environment, said: "I am delighted to be bringing this improved service to our residents. Many of them have been telling us that they want recycle more materials, because they know how important recycling is.

"In the lead up to the new service we will be doing a big drive to encourage as many residents as possible to recycle all that they can.

"I am particularly passionate about the amount of food waste that still gets thrown in the black bins – nearly 1840 tonnes per year that's over 1kg per household per week - this could all be recycled. This is such an easy win, if you put all of your food waste, in the food caddy, it will mean your black bags will remain clean and free from smells until they are collected."

To help residents understand which container to put which item in, every household will receive an information pack. The information pack will contain a leaflet explaining the new service and new stickers for their existing boxes.

Cllr Mott added; "We have changed which items go in which boxes to make it easier for residents to recycle as much as they can. We know for example that residents have lots of cardboard and glass, so we are now asking residents to put them in separate boxes which will create more space."

Officers from West Devon Borough Council will be on hand to talk to residents about the new service at the following events:

Okehampton: Market Street (Waitrose) car park	26 September
Tavistock: Bedford square; Pannier Market	27 September
Tavistock: Tesco	14 November
Okehampton: Waitrose	15 November
Okehampton: Co-op	21 November

These changes apply to all households in West Devon from December.

Any further changes to the service will form part of a trial in the new year. Any households involved in the trial will be contacted separately.

www.westdevon.gov.uk

Please be aware that telephone calls to and from the Council may be recorded for training and monitoring purposes.

Northlew Silver Band Devon's only Village Silver Band over 100 years old



Join us for band practice!

Beginners, every Wednesday in the band hut at 6:15 pm. Full Band, every second Wednesday at 7:30 pm - 9:00 pm

Anyone wanting to try to play an instrument please get in touch
Training band numbers are up again. We've had 13 at the practice for the last few weeks which is amazing and means with helpers we've out grown the band room and have popped over to Hatherleigh to the new band room there behind the new doctors surgery.

All welcome, for more information please contact:

Tim Williams 01409 221754
or
Martin Perry 01409 221376

Northlew and Ashbury Primary School PTFA



**Northlew & Ashbury
Primary School**

Northlew Parents, Teachers and Friends Association (PTFA) raises vital funds for the school through various events throughout the year.

Friday 1st November

On the night of the Northlew Carnival, the PTFA will be providing a BBQ, tea and coffee in the church rooms after the fancy dress competition in the Victory Hall. Please join us.

Monday 2nd December

Christmas Fayre
Northlew & Ashbury School
6 pm – 8 pm

Please come along and browse the lovely stalls of local hand made crafts. Refreshments available to help you shop!

- Mulled wine
- Teas and coffees
- Mince pies

There will also be a raffle on the night.

If you would like to book a table to sell your goods then please contact Jade Hatt at

hattjade@gmail.com or 07527 554208, Tables cost £7.

Monday 9th December

Creative Christmas Decorations Evening

6:30 pm for 7:00 pm start

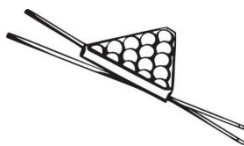
Victory Hall

Please see page 32 for details on how to book your place.

Everyone welcome

If you would like to help support the PTFA then please contact Louise Fewings (07507 301589) or Michelle Hughes.

Northlew and Ashbury Snooker Club



Come and join us!

We currently have vacancies

for membership and we would be pleased to see new faces over the newly refurbished tables. One team plays in the Bude league each winter. New members are very welcome. There is a small membership fee to join.

For more information about the club please call 01409 221919 or Simon on 01409 221881

Northlew and Ashbury Produce and Craft Show 2019

This year's Village Show was held on Saturday 7th September in the Victory Hall.

The show this year attracted over 300 entries and we were pleased to see many first time entrants alongside experienced exhibitors.

The judges this year had a particularly difficult time deciding on the winners, as the standard was, in general, so high. Thank you to all the judges - it is wonderful to have such knowledgeable and enthusiastic specialists willing to give up their time.

The trophy and medal winners are:

Children 8 and under

Most points overall:

1st - Arabella Porteous

2nd - Georgina Griffith

Joint 3rd Rosie Cann and Amelia Canham

Children and young people aged 9-16 years

1st Evie Fulford.

Arabella Porteous was awarded the medal for the best overall child

exhibit for a beautiful handmade necklace.

All children were awarded certificates, medals or stickers.

Adult classes

Home baked goods and Preserves Cup - Marion Dufty Craft Cup - Holly Dancer

Photography trophy - Bob Jinks

Flowers Cup - Denise Hayes

Floral art rose bowl - Angela Baines

Fruit Cup - Jackie Ellis

Vegetable Trophy - joint winners

Pat Canham and Colin Jarvis

Beverages Cup - joint winners

Andy Alger and Chris Baines

The Village Cider Club tankard was also presented to Steve Marwood from a huge field of 14 ciders!

This year the Vera Andrew Personal Challenge memorial Rose bowl was won by Sarah Wilby. Sarah will now select the challenge for next year's show.

The judges' Best in Show this year was won by Elaine Marwood for a beautiful, delicate crocheted scarf. Elaine was awarded the Glass Bowl, and the new Wooden Shield, kindly donated by Mags and Colin Jarvis.

This year, for the second time, every child in the village school in July 2019 entered two special categories - including self-portraits, conservation tee shirt designs, environments in boxes and views of the school. Thank you to all those who made this possible.

The Show is organised by a small, friendly committee, who work hard to make this a successful and enjoyable event. If you would like to become a part of the committee, please do contact any of the members.

The group currently includes: Cathy Fethers (Chair), Colin Jarvis (vice Chair), Simon Dancer (treasurer), Holly Dancer (Secretary), Chris Baines, Jackie Ellis, Simone Gentner and Tricia Stock.

The committee welcome suggestions, so do please make your ideas known.

This year £262.50 was raised for the nominated charity, the Salvation Army.
The Show next year is highly likely be held on Saturday 5th September (tbc)

Once again, thank you to everyone involved, in any way, in this year's show and all those who attended on the day to make it such a vibrant, fun event.

The Northlew and Ashbury Produce and Craft Show Committee

Nature Watch: a year in the life of a pond

September

As I write this, we are enjoying a late heat wave, and the water in the pond is continuing to evaporate, so I am making sure to keep it topped up. If you need to do the same, don't use tap water if you can avoid it. If tap water is all you have, then let it stand for 24 hours to allow most of the chemicals to evaporate away.

This good weather is good news for late flying dragonflies, like the Southern Hawkers, who are feasting on insects over and around the pond.

Despite the lovely warm days, the evenings are starting to get quite cool, and this will cause the chlorophyll in the leaves on trees to be withdrawn, thus producing the reds and golds of autumn. In

readiness for the leaves falling, it's a good idea to cover your pond with some fine mesh, to stop the water from getting clogged up with decaying leaves.

Leave the mesh in place until January, when you should remove it to allow next year's frogs to come to your pond and start springs cycle all over again.

I hope you have enjoyed reading my articles, and that some of you may be encouraged to build a pond of your own. It's one of the best and most satisfying things you can do in your garden.

Chris Baines

Many thanks to Chris Baines for his informative articles on the joy of having a pond in your garden as well as how beneficial it is to wildlife. This is the last article in the series.

Play Group for Grown ups

We don't stop playing because we grow old, we grow old because we stop playing!

Join us in the Methodist Chapel rooms on the on the first Tuesday and third Thursday of the month

from 2:00 pm – 4:00 pm. We play cards, do board games and jigsaws, drink tea and eat biscuits for £1.50. All are welcome.

If you need more information or to arrange transport please call Chris Scadeng on 01409 221797

September: 3rd and 19th

October: 1st and 17th

November: 5th and 21st

December: 3rd and 19th

Short mat bowls



The fastest expanding indoor sport in the UK, we now have short mat

bowls in the Victory Hall every Thursday afternoon between 2 pm and 4 pm. Just £3 per session and no yearly membership required, so why not come along and meet our small band of players.

Have a look at the game and try your hand. There are practice woods available for your use.

For more information please call Mike on 01409 220320 or Norman on 01409 221518.

The Victory Hall



Victory Hall Committee.

We are still short of committee members so if you would be interested in helping out at the hall then please get in touch. We are a very lucky community to have such a super facility.

Regular events

The Victory Hall use on weekdays is booming and includes:

- **Badminton**; Monday and Wednesday
- **Skittles**; Tuesday and Thursday
- **Short Mat Bowls**; Thursday
- **Table Tennis**; Friday
- **Toddlers Group**; Friday

In addition, the walking group, Northlew Amateur Dramatics Society (NADS) and the Parish

Council to name but a few also use the Victory Hall.
Come along and join in.

Simon Dancer
Chair, Victory Hall Committee

Booking a charitable event at the Victory Hall

Any event must meet all 5 criteria to be granted the booking price of £10.

Criteria to qualify:

1. Any event for which all the profit will go to the named registered charity.
2. Registered charity name & number required when booking and must be on all advertising for the event.
3. The organiser is a parishioner.
4. It must be a public event open to all. This offer is not for private functions.
5. The £10 covers the hall and use of the kitchen for drinks only. If food preparation and serving is required, then an additional £15 is essential to cover our extra costs.

www.northlewvictoryhall.co.uk

The Green Dragon



This historic 18th century inn is located in the village square at the heart of Northlew.

The Green Dragon is open:
Lunchtime: 12 – 2 pm
Lunch is served every day except Saturday

Monday – Saturday: open 6 pm
Food served from 6 pm - 9 pm
Sunday: open 7 pm (no food)

Quiz Nights

Look out for the The Green Dragon quiz nights.

Pop into the Green Dragon to find out more or call Dan on 01409 221228.

Theatre Highlights



Theatre Royal @ Plymouth
Box Office 01752 267222

30th Sept – 5th Oct

The Girl on the Train

17th Oct – 19th Oct & 15th Apr – 18th Apr (2020)

Welsh National Opera

More info: www.theatreroyal.com

Northcott @ Exeter

Box Office 01392 726363

www.exeternorthcott.co.uk

1st Oct – 5th Oct

Little Miss Sunshine – musical

Sat 12th Oct

Fisherman's Friends

12th November – 16th November

English Touring Opera

30th Nov – 5th Jan 20

Booking now for pantomime
Beauty & the Beast

More details from Martin Perry
01409 221376 and possible free lifts!

Red Spider Company

A hugely successful lunch was held recently funds for future dramatic productions by the members of the Red Spider Company based in Lewdown.

It was hosted by the Spider's Treasurer, Martin Perry at his home in Northlew and raised £423. The event was blessed by fine weather and a number of guests were able to lunch in the garden. The buffet was boeuf bourguignon with a wide selection of desserts. The Chairman, Mrs Maureen Cooke used her charm to extract the maximum takings for the raffle!

The next events are workshops on Saturday 5th October in Lewdown Victory Hall at 2.30 pm and on Sunday 27th October in Bratton Clovelly Hall at 2.30pm. All are welcome to come along and join the fun in preparation for a production of "The Wheel of Life" - a play written by Ron Warman concerning the latter years of the life of The Rev. Sabine Baring Gould.

For more information please contact Martin Perry on 01409 221376

Northlew Walking Group

September's walk was 'take two' of a walk we attempted in August but had to cancel due to bad weather. Unfortunately, the weather wasn't looking much better this time around but we were not to be denied twice, so off we went from the square at 2 pm as planned.

Walking with us were Colin and Mags Jarvis, Paul Bowman, Sue Sanders, Holly Dancer with Alfie, Pat Carter, Jenny Anderson, Paulette Bowman, Susan Jones, Brigid Richardson, Margaret Conkey, Marion Dufty and three new walkers Alison Rennison from Okehampton along with Richard and Anne Rossiter from Beaworthy.



Walking down the lane towards Kimber, we took shelter from the heavy showers several times but even so we were all soon looking

pretty soaked. Fortunately, we had been promised a guided tour around Mark Turley's woodland plantation, and even tea and biscuits, so this kept our spirits up.

After reaching Mark's field, we took shelter in his great looking barn, and admired his Shepherds' Hut. After a short break, Mark offered to walk us around his plantation, and so we braved the intermittent heavy showers and were treated to a very interesting tour of his deciduous woodland. Whilst getting a soaking and trying to keep up with Mark, I managed to write down a few notes as he was explaining to the group all about his trees.

Here is a summary :
The whole plantation measures approximately 12 acres, in an area called Goosen Wood. Over 6000 trees at a density of 500 trees per acre have been planted since 2011, with help from the Forestry Commission and Woodland Creation grants. 15 different types of deciduous trees, mostly indigenous to the UK.

As we walked around, one striking observation was plain to see, and that was the devastation the grey squirrels were causing to many of

the trees. There were several trees with the bark completely stripped off the trunks all the way around, sadly causing the demise of the trees.

Grey squirrels are not an indigenous species and are an introduced man-made problem in this country. They have few natural predators in the UK, probably none in this area of Devon, which is why their numbers need to be controlled. They are officially registered as vermin.

After the walk around the woods, and getting soaked again, we were treated to tea and biscuits, and a chance to shelter in Mark's barn.

The original plan was to continue with our walk towards Ashbury, after visiting Mark, but we spent so long enjoying Mark's hospitality that we decided to head back to the square the way we came. It was also still raining, so we needed to dry out.

A big thank you to Mark Turley for welcoming us to his wonderful woodland.

Next Walk: No 37

4th October

Our next walk will start at 2 pm from the square.

We have been promised a walk around Colin's orchard, so hopefully you will all be able to join us.

All welcome.

For information please call Chris Baines on 01409 221362

HOF Gallery and Cottage



The HOF Gallery is a small space

devoted to all things arts & crafty. The gallery also has a selection of fine ceramics, paintings, prints, locally crafted sculpted & hanging feltwork. A 'rustic' framing service is also available.

The studio opens most weekends 10 am – 6 pm and bank holidays

Badminton Club



The club has been running now for just under 3 years, and in that time players have come and

gone. Up until recently, we have managed to make up teams of 4 players for Monday's and Wednesdays, between 5pm and 7pm.

We chose these evenings, so that we don't clash with the skittles leagues in the winter months.

Unfortunately, for various reasons, we are struggling to fill the slots on both evenings, and sometimes can only manage a single session on the Monday or Wednesday.

Our emphasis is to have fun, and not to take the game too seriously, although it's always good to win. We don't play in a league, and don't expect players to be experts. Any age or sex are accepted, although children need to be old enough to not need supervision. If you have your own racket, that's great, but we do have spares in the hall.

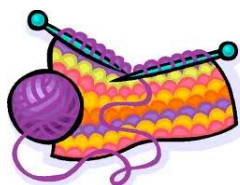
If you think you would like to give it a try, even if the times don't suit

you, then please give me a call, or send an email.

Thanks

Chris Baines :
chrisbaines63@btinternet.com or
01409221362

Knit and Knatter



The Knit and Knatter group are knitting and crocheting for good causes and

everyone is welcome to join us! We meet in the Methodist Church every 2nd and 4th Wednesday of the month from 2:30 pm - 4:00 pm. If you have any spare wool that you can donate to support the Knit and Knatter fundraising activities, please let me know and I will arrange to collect it. Your help is very much appreciated.

For more information or to donate wool please call Eunice Peck on 01409 221187

Yoga Classes

Would anyone interested in another session of yoga? If so, please let me know.

Classes to be on a Wednesday evening in the Methodist Chapel room from 7 pm - 8:30 pm as usual. Starting Wednesday 9th October.

Please be aware a minimum of 6 will be needed for the class to run.

We could have 8 weeks and the cost would be £7 per session - paid 4 weeks at a time.

Beginners and more experienced are all welcome.

Please contact Angela on 01409 221110 or 07809427991

Member of Parliament for Northlew

Mel Stride MP
House of Commons
London
SW1A 0AA
Tel: 020 7219 7037

Parish Council

Kate Hawkins

I am sorry to advise that Kate Hawkins has had to step down as parish councillor due to ill health. Many thanks to Kate for all the work she did to secure a new defibrillator for the village and also for her contribution to the parish council during her tenure as a councillor. Despite stepping down, Kate is still going to continue to keep checking the defibrillator and keep the parish council informed of any action that needs to be taken.

Parish councilor vacancy

Following Kate stepping down from the parish council we now have a vacancy. If you would be interesting in applying to be a parish councillor or would just like to know more about the role in the first instance then please contact the clerk or chair of the parish council to arrange to have a chat about the role and what it entails. The closing date for applications is Friday 18th October.

Clerk to the Parish Council

Sue Main is the clerk to the Parish Council. Sue's contact details can be found on page 29.

Contacting the Parish Council

If you have any questions for the Parish Council or you have noted something in the Parish that needs to be brought to the attention of the Parish Council please contact the clerk, chair or any member of the parish council. We welcome your input. Contact details are on page 29.

Parish Council meetings

Parish council meetings are usually held at 7:30 pm on the third Monday of each month in the main hall of the Victory Hall.

At 7:30 pm prior to the start of the formal meeting, there will be a public session (if required) which, at the chair's discretion may last up to 15 minutes, to enable members of the public to ask questions of and make comment to the council.

Please note, we request that notice of intent to ask questions/make comment during the public session be made to the clerk, Sue Main, by the Friday prior to the date of the meeting. Please advise the clerk of the topic you wish to raise.

Questions not answered during the public session may be answered in writing to the person asking the question or may appear as an agenda item for the next

appropriate parish council or committee meeting. Members of the public are asked to restrict their comments and/or questions to three minutes. This section is not part of the formal meeting of the council.

Any member of the parish can attend the formal part of the meeting but may not contribute to it unless specifically invited by the chair.

All parish councillors and the clerk have parish council email addresses found on page 29. Please use these email addresses, not their private email addresses, for all matters relating to the parish council or parish. Thank you.

Minutes

The agenda for next month’s meeting and the minutes of last month’s council meeting can be found on our website one week before the next meeting.
<http://www.northlewparishcouncil.org.uk/> A hard copy of both documents will also on the parish notice board.
Please contact Sue Main for further information or if you would like to raise a topic at the public session of the parish council meeting. Sue can be contacted by phone or email – see page 29.

Parish Council Website

The Parish Council website has now been launched and can be found at:

<http://www.northlewparishcouncil.org.uk/>.

The website is currently in a relatively basic format and is an ongoing project. The plan is to develop the scope of the website over time. So please bear with us!

If you have any feedback, comments and/or suggestions, or if you are organizing an event in the parish that you would like to be advertised on the website, then please contact:

Sue Main at
clerk@northlewparishcouncil.org.uk

or
Joanna Wilson at
chair@northlewparishcouncil.org.uk

Thank you

Reporting a problem on our roads to Devon County Council

For example: Potholes!



Please report any potholes or other problems on our roads, such as flooding and blocked drains, hazardous or fallen trees, overgrown vegetation, to name a few, to Devon County Council using the following link.

<https://www.devon.gov.uk/roadsandtransport/report-a-problem/>

Parish Council Emails

Councillors & clerk	Councillors
Joanna Wilson Chair	chair@northlewparishcouncil.org.uk
Celia Rundle Vice Chair	crundle@northlewparishcouncil.org.uk
Bryan Dufty	bdufty@northlewparishcouncil.org.uk
Mark Rundle	mrundle@northlewparishcouncil.org.uk
Terry Hatt	thatt@northlewparishcouncil.org.uk
Holly Dancer	hdancer@northlewparishcouncil.org.uk
Steve Smith	ssmith@northlewparishcouncil.org.uk
Steve Shelton	sshelton@northlewparishcouncil.org.uk
Vacancy	
Clerk – Sue Main	clerk@northlewparishcouncil.org.uk Telephone: 07956 312047

Community Contacts

Okehampton Medical Centre	01837 52233
Okehampton Community Hospital	01837 658000
Blake House Surgery, Black Torrington	01409 231628
NHS Direct	0845 4647
Okehampton Crime Stoppers	0845 2777444 or 101 (non emergency)
Okeford Vets	01837 52148
North Park Veterinary Group	01837 658777
mydentist, Okehampton	01837 52745
Okehampton Cinema	01837 658586
Inkprint, Okehampton	01837 52937
West Devon Borough Council	01822 813600
Devon County Council	0845 1551015
Reporting a power cut	Call 105 (https://www.powercut105.com)
Floodline Telephone Number	03459 881188
Citizens Advice Bureau	08444 111444

Okehampton & District Community Transport Group



Okehampton & District Community Transport Group have been serving the community for 28 years. We cover 274 square miles of rural Devon. We provide accessible, door to door

transport for the frail, elderly, disabled and rurally isolated to access both healthcare and social appointments. We have a Ring and Ride bus service which takes passengers into Okehampton for shopping or to meet friends. We run a Volunteer Car Service for healthcare transport, we have two wheelchair accessible vehicles and also a 15 seat community minibus which we use for lifestyle trips during the week and weekends and is also available to groups and societies. All our fares are subsidised.

If you would like any further information, please ring Sue or Liz on 01837 55000 or 07484 525577

Sue Wonnacott, Co-Ordinator
Okehampton District Community Transport Group
Unit 3, Okehampton Business Centre
Higher Stockley Mead
Okehampton
Devon
EX20 1FJ

www.odctg.co.uk
<https://www.facebook.com/pages/Okehampton-District-Community-Transport-Group/165867586926940>

Creative Christmas Decoration Evening **In aid of Northlew Primary School PTFA**

Join us to create your own decoration in time for Christmas.
The event will take place at The Northlew Village Hall on Monday 9th December 2019.

Doors at 6.30pm for 7pm start, the session will take approximately 3 hours.
Our resident Florist Tutor will give ideas and awaken your creativity and you will walk away with a Christmassy masterpiece all of your own.

This year you will be creating your own willow bases to ensure that all materials are sourced locally and sustainably. The finished decoration will be eco friendly and completely biodegradable.

The cost is £20 per person which includes all needed materials and a warming drink on arrival.

Contact Mai Cudmore to book your space on 221490 or through Facebook.

Please bring secateurs, a smile, garden gloves and a mug.



Advertising in the Northlew News

If you would like to advertise in the Northlew News please contact Joanna Wilson.

Business advertising rates:

- £2.50 per advert (business card size) per month or £25 per annum
- £5 for half page
- £10 full page

Please note there may be a one-off charge of £15 if your advert needs to be reset by the printers. All cheques to be made payable to The Northlew Parish Council.

Items for sale advertising rates:

- £5 per advert for half page with picture
- £1 per advert (text only) per month



OKEHAMPTON
DEVON

*and great company - just perfect -
thank you very much."*

*"We came for 2 nights and
stayed for 4 - do we need to
say any more?"*

Bed and breakfast accommodation at Elmfield

Prices from £35 per night

Extensive breakfast menu

Discounts apply for stays of 3 nights or more

Contact: Martin on 01409 221376 or 07974 859029

www.elmfield-northlew.co.uk



J & J SERVICES

**For all you car repairs and
servicing under one roof**

**Batteries • Tyres • Exhausts • MOT Preparation • Diagnostics
Repairs to old and new • All makes and models**

**Ring John
for a friendly and efficient service
01409 220091 07850 767686**

**The Knoll, Northlew, EX20 3BR
Established 1981**



JEANNETTE LAWRENCE

*Traditional
Freelance
Mobile Hairdresser*

01409 221762

Steve Lofthouse
Driving Instructor
Northlew



Take Up! Driving

07533 017938

01409 220285



J A WILKINS

Carpenter & Joiner.

All building work undertaken

**Extensions, alterations, kitchens,
bedrooms, bathrooms, roofing, etc.**

Little Wigdon
Station Road
Northlew

01409 221212

07890 929184



Joyous
holistic happiness

Amy Rogers

Reflexology/Massage/Reiki Master

Tel: 01837 871777 / 07952 318382

Email: info@feelgoodfriends.com

2019 Events at a Glance

October	<ul style="list-style-type: none"> • Sunday 6th October: Harvest Festival • Monday 7th October: Harvest Supper, Victory Hall • Sunday 13th October: Harvest Festival 2:30 pm • Monday 14th October: Harvest Festival 7:30 pm • Monday 21st October: WDDBC talk on the new recycling scheme – all welcome. 6:30 pm The Victory Hall • Ashbury Festival of Light: date to be confirmed
November	<ul style="list-style-type: none"> • Friday 1st November: Northlew Carnival. The PTFA will provide a BBQ, tea and coffee in the church rooms after the fancy dress parade • Friday 15th November: Concert by Country Rich and the 3 J's in the Victory Hall • Saturday 23rd November: Bring and Buy Christmas Fair in the Victory Hall
December	<ul style="list-style-type: none"> • Monday 2nd December: Christmas Fayre in aid of PTFA held at the school. Doors open 18:00 – 20:00 • Monday 9th December: PTFA Creative Christmas Decoration Evening, Victory Hall • Sunday 15th December: Christmas lunch in the Victory Hall (more details to follow) • Christmas services; details later

2020 Events at a Glance

January	<ul style="list-style-type: none"> • Tuesday 7th January: All pupils return
February	<ul style="list-style-type: none"> • Monday 17th February – Friday 21st February (inclusive): Half- term
March	<ul style="list-style-type: none"> • Monday 30th March – Monday 13th April (inclusive): Easter holidays



Autumn Term 2019

Half Term: Monday 21st October to Friday 25th October inclusive

Monday 28th October: All pupils return

Friday 20th December Last day of term

Christmas Break: Monday 23rd December 2019 to Friday 3rd January 2020 Inclusive

Spring Term 2020

Monday 6th January: Non-Pupil Day

Tuesday 7th January: All pupils return

Half Term: Monday: 17th February – Friday 21st February inclusive

Monday 24th February: All pupils return

Friday 27th March: Last day of term

Easter holidays: Monday 30th March – Monday 13th April inclusive

Summer Term 2020

Tuesday 14th April: All pupils return

Monday 4th May: May bank holiday

Half Term: Monday 25th May – Friday 29th May inclusive

Monday 1st June: All pupils return

Monday 20th July: Non-pupil day

Tuesday 21st July: Non-pupil day



Okehampton Library,
4 North Street,
Okehampton
EX20 1AR

01837 52805

Events at Okehampton Library

Saturday 5th October 09:30 -12:30 – Okehampton Fun Palace

Fun Palaces is an annual weekend of action including arts, science, craft and tech activities. Have a go at the following activities which people from our community are sharing with you for free. Crochet, embroidery and the ukelele

Libraries Week 7th – 12th October - A National Celebration of Libraries

Look out for our ***Pop-Up Library*** around the town during libraries week, there will be free books, subject to availability.

Wednesday 9th October 14:00-16:00 - Celebrating Libraries in a Digital World

Struggling with your hand held device - bring it into the library for staff to assist you. Take the opportunity to find out about the digital services that Devon Libraries has to offer. The library will also be open for all customers to browse and use our usual services plus coffee and homemade cake will be provided by the Friends of Okehampton Library. Free but donations welcome.

During Libraries Week we will be welcoming a class from South Tawton Primary School to show them around the library. Other schools are welcome to contact us to arrange a visit during their term times.

Thursday 24th October 10:00–11:00 - Make a Mad Money Box

Decorate a money box to keep your cash in!

Tickets £1.50 per child, please book in advance, suitable for ages 5+

Thursday 31st October 15:30–16:30 – Halloween Tricks & Treats

Join the spooky fun at our monster bash! There will be games and ghosts galore. Dress up in your most ghoulish outfit and try not to get scared! Tickets £1.50 per child, please book in advance, suitable for ages 5+

Regular activities

Adults

Tuesdays 1:30 pm – 2:30 pm, Knit & Natter

Bring along your knitting, stitching, crochet or other portable project, for a chat with like-minded crafters. Tea and coffee available at 50p a cup.

Children and young people

Tuesdays 10 am - 10:30 am – Bounce and Rhyme aimed at over 1 year olds. Free, no booking necessary

Tuesdays 11 am - 11:30 am - Bounce and Rhyme aimed at under 1 year olds. Free, no booking necessary

1st Tuesday of the month 3:45 pm – 4:45 pm – Bookworms book club for ages 7 – 11 (except Aug/Sept) . Free, no booking necessary

Wednesdays 9:30 am – 10:15 am, Duplo Builders and Storytime

For ages 0-5. Free, no booking necessary

2nd Thursday of each month 3:45 pm - 4:45 pm, Bunala Book Club for ages 12+

Free -ask staff for further details

Saturdays 10:30 am – 11:30 am Lego Builders

For ages 5+ Free, no booking necessary

Children under 8 must be accompanied to all events by a responsible adult. See our website okehampton.library@librariesunlimited.org.uk

Monday	09:00-17:00
Tuesday	09:00-18:00
Wednesday	09:00-13:00
Thursday	09:00-17:00
Friday	09:00-18:00
Saturday	09:00-13:00



@OkehamptonLib



facebook.com/OkehamptonLibrary

Walk & Talk Network



Calling all rural business women

Do you work on your own?
Would you like to network
with likeminded business
women?

Are you looking for support
and collaboration?
Would you like to exercise
more but don't have time?

Do you want to look after
your health and wellbeing?

Join our business network and see your health and business blossom.

We meet at:

Venue: Sourton Village Hall
Sourton, Okehampton, Devon
EX20 4HN

Every 3rd Friday of the month

Time: 12 noon until 2pm
Tea, Coffee and biscuits included
Please bring a packed lunch

The format of the meetings

Meet in the hall

- 1-minute introduction of our businesses.
- Women can then choose who they want to connect with whilst walking.
- Once walking, every 5-10 minutes we will choose a different person to speak with.
- Refreshments will be provided after the walk and you can continue to network.

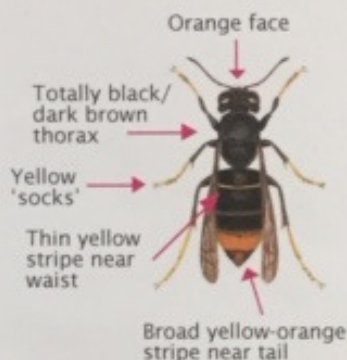
To book visit Eventbrite or email chris@time-well-spent.co.uk

Be Alert for Asian hornets!

Asian or yellow-legged hornets (scientific name *Vespa velutina*) were accidentally introduced into France in around 2004. Now they have spread through much of Western Europe. They are serious predators of honey bees, and also attack bumblebees, solitary bees and other insects.

They defend their nests aggressively and will attack anyone who gets too close: **never approach a nest**. Since 2016, there have been sightings of the Asian hornet in the UK, and a few nests have been found.

Asian hornet actual size



Asian hornets are generally smaller (25-30 mm head to tail) than our native hornet, the European hornet (*Vespa crabro*), which is 30-35 mm head to tail (but can seem much bigger!). They are easy to distinguish because Asian hornets are mostly dark brown/black, with yellow 'socks' and an orange-yellow band near the tail. Native hornets look like very large wasps, with brown legs and bright yellow and black/brown markings. Native hornets fly both night and day, while Asian hornets fly only during the day.

If you see this insect
PLEASE REPORT IT!



Asian hornet
REPORT



Native hornet
do not report

The best way to report the Asian hornet is by using the app: **'Asian Hornet Watch'**, or you can send photos and location details to:
alernonnative@ceh.ac.uk

For identification help and advice in your area, go to www.bbka.org.uk (British Beekeepers' Association), hover over **Asian Hornet** and choose **Asian Hornet Action Team map** from the dropdown menu. Click on a pin on the map for local contact details.

CBL STOVES

The Showroom, Unit 5
Red Post, Bude, Cornwall
EX23 9NW

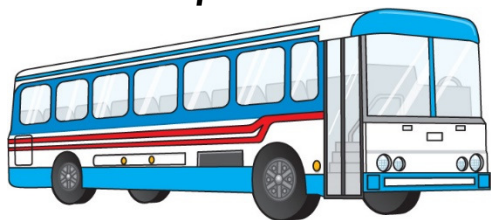
01288 381852
carl@cblstoves.co.uk
www.cblstoves.co.uk



- Stainless Steel twinwall flues
- Chimney Lining
- Iskoern Pumice lining
- Fireplace alterations
- Stove Installations
- Wood, Multifuel, Gas & Electric Traditional & Contemporary Stoves & Fires
- Chimney Rebuilds
- Slate, Granite & Glass Hearths
- Wood & Ceramic beams & surrounds
- Floating Shelves



Bus Routes from Northlew



Every Monday, Thursday and Saturday there is a morning service to Okehampton. The bus will be parked for 2-3 hours outside Waitrose where you can leave your shopping whilst you visit

Okehampton. There is also a service to Bideford which is convenient for Morrisons.

Changes to the Thursday service: Please note that the Thursday 630 service has changed so it now goes to Okehampton via Hatherleigh. It still leaves the square at 9:45 am.



Also, by contacting the office you can book our services to Crediton or Barnstaple on Tuesdays, to Trago Mills and Newton Abbot on Wednesdays and Exeter or Tavistock on Fridays. And in the school holidays we also have services to Barnstaple (Tuesdays) Holsworthy (Wednesdays) Tavistock (Fridays) from Northlew.

With 10 buses per week Northlew has excellent public transport for a village of our size

These services mainly use scenic routes ideal for showing off the area to friends that may be visiting. Bus passes are accepted at all times and if you are not lucky enough to have one then the fares are low. Let the bus take the strain out of driving and no parking charges to pay or spaces to find! Most importantly, if you live on the route then the bus stop is your front door.

From Easter day trips from the village commence for the summer as outlined on the back page and there will also be 3 short break holidays this year leaving from the village. For more information please contact Libby

Carmel Coaches Excursions for 2019



Date and venue	Cost
21st – 25th October: Gunton Hall Coastal Village near Lowestoft	£325
2nd November: Bridgwater Carnival	£14
18th – 22nd November: Turkey and Tinsel at Bembridge, Isle of Wight	£350
23rd November: Cardiff Christmas shopping	£20
30th November: Cribbs Causeway or Cabot Circus, Bristol	£17

**For more information or to book your seat
please call Libby 01409 221237**