

Northlew News

March 2021



Photograph by Paul Harris of Glavind Strachan Photography

Contents

1. Table of Contents
2. Hello from the Editor
3. What Why When Where and How your guide to the Northlew News
4. Cake That Devon and Glavind Strachan Photography
5. The Square Shop – What’s in Store?
6. 3Donkeys Clothing and A letter from the PTFA
7. Reporting Problems to Devon County Council
8. Northlew Parish Council
9. Annual Parish Assembly and Playing Field Working Party
10. Renovation of Public Toilets and SeaMoor Lotto
11. Bus Timetables
12. Square Shop Food Bank
13. P4 Pest Control and The Devon Quiz
14. The Land and It’s Soil..... It must be in the Blood
15. Raindrops Keep Falling and Beech Meadow Farm
16. Update from The Green Dragon
17. Letter from Revd. Leigh Winsbury
18. GW Architects
19. Northlew Victory Hall and Pear Tree Cottage
20. J&J Service and Friends of St Thomas
21. Village People
22. Village People
23. Village People
24. Mr Dancer’s Answers
25. Northlew Methodist Church and Marcus Barrett
26. Snooker Club and Farmer Dixon
27. Post Office
28. The Northlew Show
29. Tarpaflex
30. Devon ATV’s and Badminton, table Tennis and Walking
31. Square Shop Update
32. Coming Up in Future Editions and Piers Animal Sheds & Housing
33. Community Contact Numbers
34. Gotland Gin Legal Notice

HELLO SPRING, HELLO FRIENDS NEAR & FAR AND HELLO FELLOW NORTHLEWIANS,

I am delighted to welcome you all to the first Northlew News since the pandemic kicked in and my first Northlew News as Editor. Firstly I want to say a heartfelt thank you to all the wonderful businesses who have agreed to advertise in the Newsletter, this means the Parish Council can produce this newsletter free of charge. Thank you also to the many of you who have stepped up to the mark and produced articles for yours and my entertainment. Thanks also go to Paul Harris of Glavind Strachan Photography for the wonderful picture of the church, from an angle most of us haven't experienced! There is always room for more, so if having read this you feel inspired to contribute to the next issue, please do get in touch. A genuine request I make of you our readers, is that if you make use of one of these generous advertisers you see amongst our pages, please do mention that you saw their advert here in the Northlew News, I'd like them to know it was worth their investment! We should all be doing as much as we can to support our community, the individuals therein and the businesses that are there for us.

So, Springtime in Northlew, surely one of the first signs of spring's welcome arrival is our wonderful hedgerow displays, the snowdrops and daffodils soon joined by crocuses and then primroses, many of which have been planted over the years by Trixie Hannaford, don't they look fantastic? I am certain this year there have been many more snowdrops than in previous years, I wonder if this is anything to do with some of the reduction in pollution our surroundings enjoyed during the lockdowns we've had? If so then I look forward to an abundance of other flowers and fauna throughout the year.

Those of you that have known me for a long time, know that I am rarely at a loss for something to say, seemingly until I have a page to fill, introducing our new newsletter, so I shall take my own advice, and not waffle on, I have faith in this edition of the Northlew News that it needs little in way of an introduction, so all that remains for me to say is enjoy it please, if you have a hard copy, once you have read it pass it on, and if you need help accessing it, contact me.

Bring on the June edition!!

Celia

What is the Northlew News?

Northlew News is brought to you by Northlew Parish Council. It is a not-for profit publication, which will be produced 4 times a year by a team of regular and occasional contributors. The Northlew News is funded by a growing group of local businesses, who have all paid to advertise their products and services to you, in this newsletter.

Why do we need a Northlew News?

A free magazine or newsletter is a great way of helping to maintain a sense of community in a modern society. With a mixture of articles to interest, inform, entertain and maybe even educate readers, hopefully there is something for everyone; if not why don't you help bridge the gap, see How can I help, below!

When is it the Northlew News published?

The decision has been made to publish 4 editions of the Northlew News each year. In March, June, September, and December. Back copies will be available on the Parish Council Website.

Where Can I find the Northlew News?

You can be one of the first to receive the Northlew News by joining our email list. In order to get yourself onto the e-list just email the newsletter direct at northlewnews@gmail.com; your information will not be passed on and it will only be used to send the newsletter and occasional emails inviting people to contribute to the next issue. You can just as easily unsubscribe from the list by emailing the same address. Hard copies can be picked up from The Square Shop (buy something whilst you are there please), The Post Office (again buy something please), The Green Dragon (oh go on then, buy something!), The Church (say a prayer) and Methodist Coffee Mornings (have a coffee,) - as and when all those avenues are open! You can also request a home delivery if you need one, but please bear in mind this is only for those unable to fetch their own and is being delivered by volunteers 😊

We are also able to produce a small number of large version copies for those who struggle with the A5 format.

How Can I help?

Lots of ways! Read it, enjoy it, pass it on. Contribute, why not offer to write an article, a series, a book / film / venue review. It's not as tough as you think, and you might even enjoy it! Another great way to help is to mention to our advertisers that you have seen their advert in the Northlew News, it will give them a spring in their step for the day, especially if you buy something from them too! You can get in touch with the editor by emailing northlewnews@gmail.com.



Delicious cakes and
cupcakes delivered to
your door (within 15 miles)

CAKES from £35
CUPCAKES from £10

PHONE:
07521660031 (Char)

EMAIL:
cakethat.devon@gmail.com

FB: @cakethatdevon
www.cakethatdevon.org

Glavind Strachan Photography

Landscapes
Portraits
Commercial
Products
Family
Pets

   @GlavindStrachan

glavindstrachan.com
07566 821 273
photography@glavindstrachan.com

The Square Shop – What's in store?

The Square Shop has been open for just a year, all but 3 weeks of which have been under lockdown or some Covid restrictions.

As a Community Interest Company, the emphasis is on providing a service to the village as opposed to generating profit, which means we can offer local produce, a prescription collection service, food bank collection point and a source for local producers, businesses, and artists to vend their wares.

We currently stock fresh seasonal produce from Hallwood Farm at Petrockstowe which is always of exceptional quality and is grown locally. The Jersey cows at Taw River Dairy produce ethically responsible and sustainable milk, that alone brings customers a long way to enjoy it twice weekly. We also offer a wide range of local cheeses, Cornish Brie and tasty Tickler alongside delicious smoked Curworthy cheddars and other regional varieties. Our raw honey is sourced from The Secret Garden Apiary, very local to the village which according to popular belief makes it excellent at helping keep hay fever at bay. Quality meats, sausages and bacon come from Edwards Butcher's in Hatherleigh and our free-range eggs are delivered weekly from Black Dog near Crediton. Fresh bread and cakes arrive three times a week from Ellis Bakery in Tavistock. We have also recently added locally roasted coffee sale from No1 Coffee in Okehampton.

Non-food items we stock from local businesses include Farmer Dixon's naturally coloured sheep yarns - 100% pure wool which has not been dyed, treated with chemicals or blended with other yarns in beautiful shades. So you can now knit yourselves a scarf and hat with wool from Sheep who live in the same village as you! We are also stockists of Dartmoor soap which is popular with visitors and locals alike and comes in a range of wonderful scents, one of which is scented with from Dartmoor Ale, we expect to sell several bars for Father's Day in June! We also stock delightful greetings cards, some painted by a talented parishioner and some photographs taken around the area by Paul from Glavind Strachan Photography.

We are happy to take orders for any items as required. With a good range of staples and grocery items we can meet your daily needs and there is always the basics of a tasty meal here so no need to drive into town so often! Your carbon footprint is kept to a minimum!

We cannot emphasise enough that we need you - our valued customers - to ensure that we can continue to operate in the village. You can support us, even if only with a small regular purchase, which will make a huge difference and will enable us to continue.

We look forward to welcoming you on weekdays between 10-4 and 10-12 at weekends. Please note masks must be worn or you can be served outside. Social distancing is maintained, and a one-way system is in operation at present. We can accept debit cards or good old cash!

We hope to see you very soon,

Steve

MONDAY 10AM – 1PM

TUESDAY – FRIDAY 10AM – 4PM

SATURDAY & SUNDAY 10AM – 12 NOON



3 DONKEYS™

THE ONLY 2-INTO-1 WOMEN'S COVERALL

3 Donkeys is a family run business based in Northlew, Devon. Producing top quality women's coveralls for all types of equestrian and leisure activities.

www.3donkeys.co.uk

Call: 01837 658328

sales@3donkeys.co.uk

A Little Note from the PTFA

Dear All,

Just a little update on the Northlew and Ashbury PTFA. As like everything now the PTFA have not been able to do our usual fundraising events due to the pandemic. It is very disappointing that we have not been able to put our annual events on that so many of the children and parishioners enjoy and has proven to be so vital to raise funds for the school. We really hope to be able to get back to normal as soon as possible and look forward to seeing everyone again!

The PTFA would like to say a massive thank you to everyone for supporting our Christmas hamper draw, thankfully that was still able to go ahead and we raised a huge £350.50! We would also like to say a big thank you to the shop for helping us sell the tickets and for running their own draw, guess the name of the bear, which raised another £27.

Stay safe everyone, we look forward to being able to share some fun dates for the diary soon.

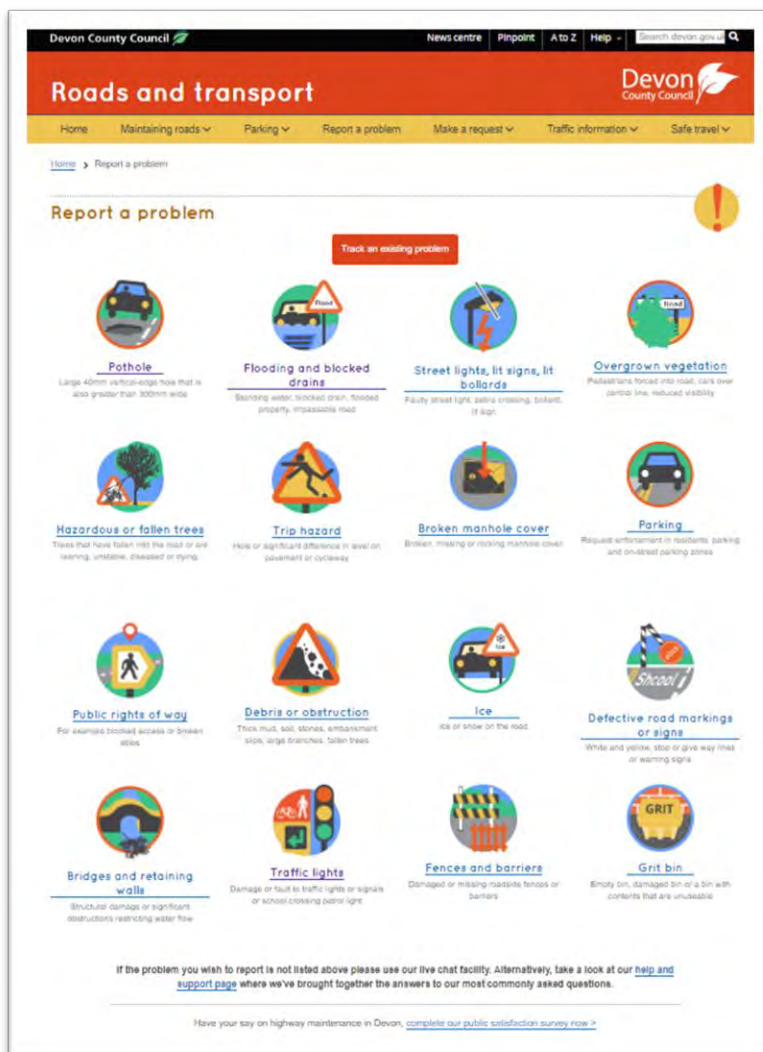
Kind regards,

All at the PTFA

Reporting Problems to Devon County Council

The quickest and easiest way to report all manner of problems around our delightful village is to do so directly to Devon County Council. It's really easy and with most of us having a fairly useful phone on us at all times it only takes a few minutes. You can report dirty signs, overgrown hedges or vegetation, potholes, flooding, traffic lights that aren't working correctly (not so much of an issue in Nor'lew tis true) wobbly manhole covers, basically loads of stuff.

Follow this link <https://www.devon.gov.uk/roadsandtransport/report-a-problem/>



As you can see there are 16 different categories of problem you can report. If you can take a quick picture of the problem that helps the staff sent out to assess or solve it, to be certain that they are dealing with what you meant. You can only download a maximum of 5 photos per report though. You will be asked to locate the issue on map and then it logs the problem to that location and on some of the reporting pages you can see if others have already reported the same issue. You can put as much or as little detail as you want, but I have found the more you put the better chance they have of understanding how dangerous / inconsiderate the problem is, and if they deem it likely to cost the council money, they sort it quite quickly. (I can only speak from my experience, the Editor)

Northlew Parish Council

Contact details for your nine Councillors, who always welcome your support and comments, are ;-

Holly Dancer	Cllr & Chair	chair@northlewparishcouncil.org.uk
Celia Miners	Cllr & Vice Chair	cminers@northlewparishcouncil.org.uk
Andrew Alger	Cllr	aalger@northlewparishcouncil.org.uk
Shirley Brookman	Cllr	sbrookman@northlewparishcouncil.org.uk
Mai Cudmore	Cllr	mcudmore@northlewparishcouncil.org.uk
Gillian Dixon	Cllr	gdixon@northlewparishcouncil.org.uk
Bryan Dufty	Cllr	bdufty@northlewparishcouncil.org.uk
Shaun Millership	Cllr	smillership@northlewparishcouncil.org.uk
Mark Rundle	Cllr	mrundle@northlewparishcouncil.org.uk

Details on how to contact your Borough and County Councillors and Member of Parliament are also found on our website <http://www.northlewparishcouncil.org.uk/YourCouncillors.aspx>.

Meetings

Parish Council Meetings are usually held at 7.30 pm on the third Monday of each month in the main hall of the Victory Hall but are currently held virtually via Zoom for the foreseeable future due to Covid-19 restrictions. Details of the Zoom login in details can be found on the agenda which is uploaded onto the website at least 3 days prior to the meeting at <http://www.northlewparishcouncil.org.uk/FullCouncil.aspx>. At 7.30pm prior to the start of the formal meeting, there is a public session (if required) which, at the Chair's discretion may last up to 15 minutes to enable members of the public to ask questions of and make comment to the Council. We request that notice of intent to ask questions/make comment be made to the clerk by the Friday prior to the date of the meetings. Questions not answered at this meeting will be answered in writing to the person asking the question or may appear as an agenda items for the appropriate parish council or committee meeting. Members of the public are asked to restrict their comments and/or questions to three minutes. This section is not part of the formal meeting of the Council. Any member of the parish can attend the formal part of the meeting but may not contribute to it unless specifically invited by the chair.

Minutes

The minutes of the last month's council meeting are available on Parish website at www.northlewparishcouncil.org.uk. Please contact our clerk Sue Main for further information or if you would like to raise a topic at the public session of the Parish Council Meeting. Sue can be contacted at email: clerk@northlewparishcouncil.org.uk or on 07956 312047.

Website

The website contains a whole host of useful village information including latest news on the home page, a local information and memory page, your Councillors, agenda and minutes and back copies of the newsletters.

Noticeboard

Our clerk also produces a monthly noticeboard with information about what is going on in the Parish and also notifications from West Devon Borough Council (and Devon County Council as appropriate). This can be found on the home page of the website and also on the noticeboard at The Victory Hall.

If you have any community-related news for inclusion on the Noticeboard or if you have any feedback, comments and/or suggestions about the website or if you are organising an event in the parish that you would like to be advertised on the website, then please contact our Parish Clerk at clerk@northlewparishcouncil.org.uk.

Annual Parish Assembly

Notice is hereby given that a virtual Annual Parish Assembly will be held on Monday 26th April at 7.30pm prompt.. All parishioners are welcome to attend and details about the access codes for audio or visual access to the meeting will be available to all from the Northlew Parish Council website or on the Agenda displayed on the Parish Noticeboard by the Church Room. There will be a succinct presentation about the endeavours of the council over the last 12 months and any plans the council might have in the forthcoming 12 months.

If you wish to raise any questions to the Council, please advise the clerk no less than 1 week before the Assembly, by emailing Sue Main on clerk@northlewparishcouncil.org.uk or calling 07956 312047.

Northlew Playing Field Working Party

Our playing field is a wonderful amenity for all our villagers to use. The Parish Council are keen to form a Working Party to help keep the playing fields in tip-top condition for everyone to enjoy. One of the councillors will act as a lead for this and will communicate to all villagers via social media or other method when their help is required. Anyone and everyone is welcome to be involved with the working group, whether by keeping an eye on litter, damage, wear and tear of equipment as well as annual pruning, weather proofing furniture etc. If you would like to be involved in the working party, at any level, once a week, once a month, once a year, whether you have every gardening tool under the sun or just a bucket full of enthusiasm, please do get in touch and let us know. Mention it to any one of the parish councillors when you see us out and about in the village.



Renovation of the Public Toilets

For several years there have been suggestions about renovating the existing public toilet block and using the plot of land to the best purpose for our community. With no clear or obvious direction, the Parish Council have deferred making a decision on the future of the public toilets; however, the deteriorating state of the toilet block means we can no longer defer action.

The Parish Council, who owns the plot of land and buildings and who manage the toilets, have decided to gather the opinions of the parishioners about what happens next to this plot of land.

Due to the social distancing guidelines that we are likely to be living with for some time, a public meeting cannot be held for the foreseeable future, but the decisions and actions cannot be delayed any further. To this end the Parish Council are conducting a survey to gather opinion and interest in the development.

The survey can also be accessed online at <https://forms.gle/UHHJbiurc5b57Tbh7> or hard copies are available at The Square Shop, Victory Hall, the Church Rooms or in the Northlew News. The deadline is Friday 16th April. Hardcopies can be deposited at The Square Shop or scanned and emailed to clerk@northlewparishcouncil.org.uk.



SeaMoor Lotto was created in 2018 by West Devon Borough Council.

Set up to support community projects in the local area, SeaMoor Lotto operates on the principle of raising money within the community for the community. We empower local good causes to raise money in a fun and effective way. A ticket for SeaMoor Lotto costs £1 a week and 60p will go directly to good causes!

Northlew Parish Council are a registered good cause with SeaMoor Lotto, so you can raise funds for the parish council, and potentially win something for yourself. Google SeaMoor Lotto, it's really simple to join!

www.seamoorlotto.co.uk

This is how the lottery works for you

SeaMoor Lotto is an exciting weekly lottery that raises money for good causes in South Hams and West Devon. All good causes supported by the lottery will benefit South Hams and West Devon and its residents.

Play the lottery, support South Hams and West Devon – it's that simple!



How tickets work?

Tickets for the lottery cost just £1 per week, with a top prize of £25,000!



About the draws

A weekly draw takes place every Saturday night. Match all 6 numbers and you win the JACKPOT!

[See our prizes](#)



Raising money for your cause

From every £1 ticket you buy, 60p will go to local good causes in South Hams and West Devon and improving our community.

Bus Timetables



Here are the timetables for the service buses that run from the village on a regular basis.

NORTHLEW - HATHERLEIGH - OKEHAMPTON MD Buses 630 NORTHLEW - OKEHAMPTON via Sheepwash MD Buses 631 NORTHLEW - OKEHAMPTON MD Buses 633 Via Germansweek, Bratton Clovelly

Monday, Thursday and Saturday (Except Public Holidays)

	633 M	630 Th	631 S		633 M	630 Th	631 S
NORTHLEW Square	0930	0945	0945	OKEHAMPTON Market Street	1230	1245	1245
SHEEPWASH Square	-	-	1000	BOASLEY CROSS School	1245	-	-
HIGHAMPTON	-	-	1005	BRATTON CLOVELLY Clovelly Inn	1255	-	-
HATHERLEIGH Moor View	-	-	1010	GERMANSWEEK War Memorial	1310	-	-
EXBOURNE Red Lion	-	-	1020	FOLLY GATE Crossways Inn	-	1250	-
SAMPFORD COURTENAY New Inn	-	-	1026	INWARDLEIGH Memorial	-	1255R	-
SAMPFORD COURTENAY Station	-	-	1030	SAMPFORD COURTENAY Station	-	-	1252
HATHERLEIGH Moor View	-	1000	-	SAMPFORD COURTENAY New Inn	-	-	1256
INWARDLEIGH Memorial	-	1010	-	EXBOURNE Red Lion	-	-	1302
FOLLY GATE Crossways Inn	-	1014	-	HATHERLEIGH Moor View	-	-	1312
GERMANSWEEK War Memorial	0945	-	-	HIGHAMPTON	-	-	1317
BRATTON CLOVELLY Clovelly Inn	1000	-	-	SHEEPWASH Square	-	-	1322
BOASLEY CROSS School	1010	-	-	HATHERLEIGH Moor View	-	1305	-
OKEHAMPTON Market Street	1025	1020	1037	NORTHLEW Square	1325	1320	1337

CODE: M - MONDAY ONLY Th - THURSDAY ONLY S - SATURDAY ONLY
 R - SERVES THIS POINT IF REQUIRED BY PASSENGERS ON THE BUS

These services are financially supported by Devon County Council

NORTHLEW - BIDEFORD Via Shebbear MD Buses 642

Monday only (Except Public Holidays)

NORTHLEW Square	0915	BIDEFORD The Pill (Riverside Car Park)	1330
HIGHAMPTON	0925	STIBB CROSS	1350
SHEEPWASH Square	0930	ROWDEN FARM	1354
BLACK TORRINGTON Black River Inn	0935	CAUTE Phone Box	1359
BRANDIS CORNER	0940	SHEBBEAR Square	1405
BRADFORD Lana Cross	0945	DIPPER MILL	1415
DIPPER MILL	0950	BRADFORD Lana Cross	1420
SHEBBEAR Square	1000	BRANDIS CORNER	1425
CAUTE Phone Box	1006	BLACK TORRINGTON Black River Inn	1430
ROWDEN FARM	1011	SHEEPWASH Square	1435
STIBB CROSS	1015	HIGHAMPTON	1440
BIDEFORD The Pill (Riverside Car Park)	1035	NORTHLEW Square	1450

This service is financially supported by Devon County Council

NORTHLEW - HOLSWORTHY Via Sheepwash Taw & Torridge 639

Wednesday only (Except Public Holidays)

NORTHLEW Square	0925	HOLSWORTHY Manor Car Park	1335
HATHERLEIGH Market Square	0940	ANVIL Corner	1340
HATHERLEIGH Moor View	0942	COOKBURY Church	1348
HIGHAMPTON	0946	HOLEMOOR CROSS	1354
SHEEPWASH Square	0952	BRADFORD Lana Cross	1355
BLACK TORRINGTON Black River Inn	1000	BRANDIS CORNER	1404
BRANDIS CORNER	1006	BLACK TORRINGTON Black River Inn	1410
BRADFORD Lana Cross	1015	SHEEPWASH Square	1418
HOLEMOOR CROSS	1016	HIGHAMPTON	1424
COOKBURY Church	1022	HATHERLEIGH Moor View	1428
ANVIL Corner	1030	HATHERLEIGH Market Car Park	1430
HOLSWORTHY Manor Car Park	1035	NORTHLEW Square	1445

This service is financially supported by Devon County Council

Have you ever been really up against it? Not just a bit short until pay day, but really struggling? Many won't have and never will, with luck. But while not knowing what lies ahead is just part of life, no one should have to add food insecurity to whatever else is going on in their lives. We've all had our own difficulties during the current pandemic, but add to that the loss of a job perhaps, or a change in benefits, an illness or disability or a mental health issue, or a bereavement, or divorce, or struggling as a lone parent, debt, addiction, domestic violence, homelessness..... the list is endless. The issue of poverty is political, economic, and social but this piece is not going to examine any of those perspectives. Clearly some find it easier to cope than others, but if the definition of a civilised society is one which helps its most vulnerable, then we all need to act.

On a positive note, this is where you come in. Perhaps we can help you or maybe you can help us. We have a small food bank at the back of the shop and would like to help any villagers who may be in need of some support. If you are able to make a small donation of an in-date item as per our suggested list below, that would be fantastic (remember items do not need to be purchased from the shop).

If you need help for whatever reason then pop in or message us via the Square Shop Facebook page and we'll put together two days' worth of food. There is no referral system via a third party professional and most importantly no shame or embarrassment. As we only allow one customer in at a time you will remain anonymous as your bag is handed overlooking the same as anyone else's shopping.

A typical parcel for 2 days will include:

- Cereal
- Soup / Pasta / Rice
- Tinned tomatoes/passata
- Lentils/beans/pulses
- Tinned meat/fish
- Tinned vegetables and fruit
- Tea/Coffee
- Biscuits
- UHT milk (or non-dairy equivalent)
- Fruit juice

plus any fresh items we may have spare on the day such as eggs, bread or vegetables.



If there is no demand within the village, we will take items regularly to the Okehampton Food Bank which supports the town and surrounding villages not only with food parcels but also signposts to other agencies for more detailed assistance.

Let us keep it local, help each other and get through this together.

Thank you.



Got Pests like these??

Call

P4 Pest Control

Do you have rats, mice, moles, or any other annoying pests??

We can help with single visits or maintenance plans. We work on farms, equine centres, and private dwellings all around the area, humane solutions found whenever possible. Whatever the problem P4 pest control can help

contact Rob 01837 89097, 07713 584316 or Tim 07786 248554

A Devon Quiz

See how you get on without using the dreaded Google.

1. What is the highest Tor on Dartmoor?
2. What town is twinned with Okehampton?
3. Which Devon town has 13 letters long, all are different?
4. Which Sherlock Holmes story is mainly set on Dartmoor?
5. Where did Sir Francis Drake live?
6. In which month is the Tavistock Goose Fair?
7. Who is the War Horse?
8. In what year did the Mayflower leave Plymouth?
9. Where do the Exeter Chiefs play their home matches?
10. What is the name of the National Trust run, Lutyens designed castle which was completed in the 1920s?

With thanks to Simon Dancer

You can find Simon's Answers further on in the Newsletter.....



In 2012 Colin and Mags Jarvis retired to Northlew, they bought a cottage with a bit of land and set about recreating some of the aspects of life they had both enjoyed. Starting life in Brentwood Essex, Colin went on to study at the University of the West of England, picked up a degree (and a wife to be.) he also spent time at Seale Hayne college on the other side of Dartmoor enjoying many times there, memorable enough to want to come back to the area later in life. By the end of the 70's Colin had returned to Essex, married Mags and they had settled near Chelmsford to raise their girls. Time spent teaching in a large secondary school was too 'indoorsy' so Colin started his own business in arboriculture, farm hedging, tree planting and surgery. After nearly 30 years of this Colin and

Mags decided to head south-west to retire and fortunately (for Northlew) drove past all the cider villages in Somerset to get to us! Thank you very much Colin for volunteering to write for this 4-part series for the newsletter.

The land and it's soil..... it must be in the blood.

When I was 9 how lucky I was. Dad gave me land for my own farm! I fenced it to make 4 small fields, built a timber and cob barn and laid a stone path. I even dug a well! Never mind that it was miniature, 4 square metres, I grew lettuces in its fields to feed the livestock, 2 pet tortoises! At 13 yrs. old the Farmers Weekly was dropping through the letterbox and favourite books all seemed to involve farming and the countryside not surprisingly.

It was then I found out that my grandparents and those before them had been either farmers or smallholders. This 'thing' this passion for farms and countryside must be in my blood!

Although my parents discouraged me from a farming career, Dad and I spent hours walking countryside paths and fishing in rivers and lakes. His friend got me a job on a 200-herd dairy farm not far from home when I was 14. It was amazing countryside in this part of Essex and less than 30 miles to central London. From a hill I could see St Paul's Cathedral!

It was 1968 and the school summer holidays. Up at 5am, did my paper round then to the farm at 8.30. Some Tractor driving but the real responsibility was staying all day with a herd of 25 or so dry pregnant cows. I took them each day onto 150 acres of unfenced common land for free grazing, with just a stick! The cows loved the herb rich grazing. It was my perfect summer job in the countryside and reinforced my passion for land and food.

I could never have guessed what I found out the following year. Fate had a terrible plan for this farm and 1969 revealed its death sentence....

Raindrops keep falling.....

If you live or have lived in Northlew, you will know that people joke there are only 3 types of weather, raining, just stopped raining, or about to rain!

Bryan Dufty, lifelong parishioner and veteran of many village committees and councils has been recording the monthly rainfall since 1980, on his family farm at Stoney. Brian has kindly agreed to share his findings and for each edition we will compare a handful of years of Northlew rainfall data! All measurements are in millilitres. Who knew rainfall could be so interesting!

	1981	1991	2001	2011	2021
January	110	189	127	148	185
February	101	102	94	79	150
March	285	113	145	29	??



- Goat Meat and Goat Milk Soap
- Free range, Grass fed, Rare Breed Lamb and Hogget
- Available from the Market in the village every Friday or we can deliver to your door.

Tel: 07737 055618
email beechmeadowfarm@outlook.com

An Update from The Green Dragon



It is safe to say 2020 will certainly be a year that we will never forget. We faced an unprecedented number of challenges

professionally, but we were also thrilled to end the year in the most exciting way possible, with the safe arrival of our baby girl. Hettie Mae Anscomb arrived happy and healthy on Tuesday 29th December at 10.15am weighing in at 7lb 2oz. Both Hettie and Karla were fine.

We cannot thank everyone enough for the cards, presents and well wishes we have received over the last 2 months, we certainly have a very lucky little girl and we cannot wait to introduce her properly once life begins to return to normality.

We would also like to thank you all for your support, both over the last year and, most recently, our takeaway evenings. We have been absolutely blown away by how many people have ordered take-away and continue to do so each week. We couldn't do this without you and are so incredibly grateful.

With the recent news that we will soon be able to reopen, we have once again had to assess the safest way to do this, both for our family, our staff and for all our customers. Working within the government guidelines, we can offer outdoor service ONLY from April through to September. We are currently working on installing a partially covered/heated area for eating and drinking. We will keep you updated as this progresses and confirm our opening times in due course via the usual channels.

Thank you for your continued support, we look forward to welcoming you back very soon. .

Dan

St Thomas of Canterbury Church

A letter to the Village from Revd. Leigh Winsbury

Hi there,

If we haven't met yet [and I do apologise if that's the case!] I'm Leigh Winsbury, the newish vicar of St. Thomas of Canterbury parish church; among others! I've been here 2 years now, and I'm so glad I had that first year to get to know a number of people across the five



parishes before being 'visually separated' from you all. At least now when I get on the phone or see your responses online to my little videos I have a fair chance of knowing who you are!

As far as church news goes, it's been up and down all year, just like everyone else. Plans for several weddings have been changed more times than my running shorts and we're all hoping to get away with the dates we're holding in May.

Back in March we were forcibly closed, and I know how unpopular that was here in Northlew; I'm really sorry, but we weren't given the option back then. As soon as church buildings could open, we were among the first, thanks to the commitment and enthusiasm of the local team being willing to go in doing the necessary daily 'Covid-clean'. Again, as soon as services were allowed, Northlew and Hatherleigh were up and running that first Sunday. Of course, back then, the risk seemed minimal. That all changed after Christmas, so, when the local threat looked more serious, we took the decision locally to suspend services for a bit.

With hopeful signs in sight, and a fantastic effort by our local medical centres seeing many of our residents vaccinated, I believe the time is right to resume the worship of God in the churches here on our patch. All being well, we're aiming at weekly services again from the 7th of March, but that rather depends on us getting the gas pipe fixed for the heating. Failing that, the church would make a great space for any local farmers to hang their beef! [Or is it just me as thinks it's not that hot in there sometimes?]

As I write here in Hatherleigh today, there is a light dusting of overnight snow outside making the place look very pretty, so I guess from that,

Northlew is hemmed in by glaciers threatening the coming of Ragnarök. I've been running Summer Lane a bit lately which always makes for more of an adventure than anywhere else round here as you seem to get the worst of the weather. Even more reason to be grateful to Shirley, Steve and the team for the Square Shop which has risen so well to the challenge of this year. Well done also to Dan & Karla for being so flexible and keeping up the community cheer. Can I encourage you to support these good folks in the good times as well as the bad.

In case you didn't know, I'm still putting out a little God-centred video each Sunday on the 'Northlew and Ashbury life' Facebook page. These are pretty lightweight and amateur; if you'd prefer something more like 'real' church, my colleague Rev. Steve Cook of Okehampton is livestreaming their morning service each Sunday and releasing a fuller, online service too. Links to those can be found on the Northmoor Team website.

For now, may I leave you with God's blessing for His protection and peace, and please do shout if you have want of a vicar.

Revd. Leigh Winsbury.



An advertisement for GW ARCHITECTS LTD. The top part features the company logo: 'GW' in white on an orange background, followed by 'ARCHITECTS LTD' in white on a grey background. Below the logo is a photograph of a modern, single-story building with a dark, flat roof and large glass windows. The building is surrounded by greenery and trees. At the bottom of the advertisement, there is contact information: '01409 281362 | 07432 760041' and 'gareth@gw-architects.co.uk | www.gw-architects.co.uk'. A thin orange horizontal line is positioned above the text 'Bespoke Creative Solutions' at the very bottom.

Northlew Victory Hall

We have been very busy during lockdown with the updating of the electrical and fire alarm system, carrying out necessary maintenance and producing risk assessments. A big thank you to all the trades and volunteers involved.

Our Covid-19 Risk Assessment is adapted in accordance with each update issued by ACRE/[GOV.UK](https://www.gov.uk). We hope to get some normality back into the village with the hire or use of the hall for your events but hirers must comply with this Risk Assessment and the Special Hire Agreement which are available from the booking secretary, Jayne.

Please direct all enquiries to Jayne on 01409 221225/07815418126
jayne.northlew@gmail.com

Peartree Cottage, Howards Gorhuish, Northlew, EX20 3BT



Peartree Cottage, is a charming two-bedroom self-catering holiday home standing in the grounds of Howards Gorhuish, 2 miles from Northlew. Howards Gorhuish, is a former dairy farm dating from late 17th century and the cottage was originally the cowshed, converted in the 1990s. It has recently undergone a complete refurbishment but retains its old-world charm. It is warm, cosy and comfortably furnished with Visit England 4 Star Gold Award Accreditation.

Accommodation: Sleeps 4 plus one infant (travel cot provided). Fully equipped kitchen/diner. Triple-aspect sitting room featuring stone inglenook fireplace with wood burning stove and French doors leading to the cottage's private patio & garden. Entrance hall leading to stairs and upper landing which leads to two spacious double bedrooms each with its own ensuite. Both bedrooms are double aspect with lovely views across the gardens, meadow and beyond. Further overflow accommodation available in The Old Cob Barn, which can be let as B&B.

Garden features private patio and steps leading up to a secluded lawned area with feature shrubs. Garden furniture & BBQ. Gate leading to wildflower meadow with summer house and a small shady copse. Dog Friendly. Open all year round. Short breaks available.

For further information contact: Keith & Jackie Ellis Tel: 01837 658750

Website: <http://www.peartreecottagedevon.com> or Email: jackie.ann.ellis@btinternet.com

[@PeartreeCottageDevon](https://www.facebook.com/PeartreeCottageDevon) or www.Cottages.com



J & J Services
The Knoll, Northlew
EX20 3BR



Tel: 01409 220091 Mob: 07850 767686

Proprietor: John Millership

REPAIRS – SERVICING-TYRES – RECOVERY – MOT PREPARATION

We are your local friendly garage, established for 35 years.

John and his experienced staff are happy to offer servicing, repairs and MOT preparation for all makes and ages of vehicle.

Tyres, batteries and exhausts can be supplied and fitted all at very competitive prices.

Courtesy cars available. No Job is too Big or Small

FRIENDS OF ST THOMAS' CHURCH, NORTHLEW

The Committee of The Friends of St Thomas' Church (FOST) would like to thank all who have supported this charity over the past difficult year and we look forward to your continuing support in what we recognise as very trying times.

How could you not love our beautiful Church which must be the oldest building in the village. This iconic building needs to be preserved for future generations, the only way that can be done is by all of us pulling together. The funding of the maintenance of the church building, its fabric and the churchyard is the responsibility of The Friends. This is very different to the day to day running of the Church which is the responsibility of the Parochial Church Council, but we obviously work very closely together in identifying issues with the church building or churchyard which may arise.

The Friends of St Thomas' Church was formed in 1997 and was registered as a Charity on 19 June 1998, registration number 1070123, with the purpose of helping with the preservation, maintenance and embellishment of the fabric, interior decorations, ornaments, furnishings, and churchyard of St Thomas' Church. Bequests, donations, and membership subscriptions help the charity to achieve its principal aim of promoting public interest in St Thomas's Church, its history and work. Membership of FOST and its committee has never implied a faith or a desire to worship, but simply an interest in the preservation of a very special old building and our peaceful churchyard where so many Northlew people are buried.

In the last few years, The Friends have paid for repairs to the vestry roof & chimney and for repairs and maintenance of the churchyard mower.

Over recent years, sadly the membership of FOST has declined and new Friends are very much needed as well as new Committee members to carry on the important work of preserving our lovely historic Church. To find out more, please contact the Secretary, Jackie Ellis, on 01837 658750 or by email:

jackie.ann.ellis@btinternet.com.

In the Newsletter survey just before Christmas, many of you mentioned having an article about some of the interesting characters in and around Northlew. Christina Oxley approached me and volunteered to write this series, and I am incredibly grateful and glad that she did. So please, pour a coffee and enjoy part 1 of Christina's series...

Village People

By Christina Oxley

Memories of Mrs Hilary Isaac (nee Adams)

Hilary has lived in Northlew all her 90 years. Hilary's father was born in 1901, he inherited the family farm, Overlake Farm Kimber, he was the 3rd generation to run the farm. The original farmhouse was a Devon longhouse with the family living at one end and the animals at the other. Sadly, it burnt down around 1913 and so a new house was built in 1914. Hilary was the first girl to be born in that house in 1930, in fact the first born of five children, her two brothers still live in the village, one sister in Hatherleigh and one all the way down in Cornwall, all 5 siblings are still fit and well.

All the family lived & worked on the farm, along with two further workmen who lived in cottages on the farm. Livestock included pigs, sheep, cattle, and chickens meant a well-mixed farm.

Hilary attending the local village school which consisted of three rooms until the age of 14. The school was in the same location as it is now, although was much smaller than it is today. The main hall of the school was divided into three rooms, with different ages, infants, middle and junior, being taught together within three classes.

School lunches consisted of packed lunches, to eat her lunch she would go to sit in her Aunty and Uncle's shop next to the school. On Tuesdays and Fridays all the children would be walked to the Church Hall, (next to the current village shop) where they would have a cooked school dinner. On leaving school at 14, Hilary worked on the family farm, housekeeping and working wherever she was needed every day. Hilary also remembers attending Sunday school at the Methodist Church, with the highlight being the annual outings around Devon and Cornwall.



Hilary's family shop and the Church Room

Her Uncle built and started a bakery on to the left of the house, the living room of which was the Village Shop, he also opened a butcher's on the right where you can see a shed in the picture, this is where the current Square Shop is. In 1963 her mother and father took over the running of the shop, and in 1973 with a young family of 3 boys, Hilary took the mantle from him, keeping it in the family and running it until retiring in 1995. Running the shop for all those years was very rewarding, providing a valuable service and living and being at the heart of the community, knowing all the locals and where they lived.

Pat Durston and her husband Ted took over the shop, Pat still lives in the main part of the premises, although she hasn't run the shop for many years, she does allow the Square Shop to operate from part of her property.



A newspaper article from when Hilary handed over to Pat

Her earliest memories are of having no electricity on the farm, although her father had a generator. There were not many cars around either in those days, her father was one of the first to get a car in the village, around 1920, he normally drove around in a Woolsley, they also had a telephone which was unusual to say the least! Hilary clearly remembers the first phone number which her brother still has today albeit it a few digits longer! Hilary can remember a time when there was no parking in the square, she even has a photo to prove it!



The Village - before all the parking.

The village itself was very self-sufficient having five shops, two of which were run from the family home's living rooms. These were a sweet shop, also selling cigarettes and a few groceries, a newsagent's and some more grocery shops. The village also had a couple of farriers, three tailors, a cobbler's and three builders. There was also a slaughterhouse behind one of the central houses, directly behind where the phone box is now.

She remembers Mr Born, the man who started the first bus service from Northlew with an open backed lorry about 10 years before Hilary was born. This then grew into a larger bus company running buses to Okehampton. He then moved Born Buses premises, to where Carmel Coaches now stands. There would be buses running to town once on Wednesday and on Saturdays' at 10am, 2pm and 7pm. Saturday being the high light of the week as the evening bus would be full of people who then went to the Cinema. It was also Market Day along with the Pannier Market, (where Red Lion Yard is now).

As a rural farm worker the Second World War did not impact too much of their daily lives, there was of course rationing but they managed very well with all the farm provided. Sadly, there were more losses during World War 1 when 22 villagers were lost.

Hilary met William (Bill) Isaac in the early 50's and they married in 1956. Bill originally came all the way from Highampton, and as newlyweds they lived in one of the workmen's cottages on the farm until they moved into their own home in the village. Hilary and Bill had 3 boys, Peter, Nigel and Trevor. Hilary and Bill had a very long and happy marriage, sadly Bill passed away in 2005, leaving a huge space in the family and the village.

Living in Northlew all her life Hilary has seen the village grow massively and can also remember the six, (then council) houses being built on Station Road, which at the time felt like the edge of the village. She also remembers the house her and Bill retired to being built, never expecting to end up with the keys! In her lifetime she can remember moving into a house with no indoor loo, just a bucket outside and her

father installing a bathroom for them! Other big life changing improvements in housing have been running hot water, with a Rayburn providing this as well as heat in the kitchen and other rooms, homes within the village having central heating too, that was a good invention!

Hilary remembers the village having lots of clubs over the years, Darts and Football not to mention the Northlew Silver Band which has been running for over 100 years. Hilary was a lifelong member of the WI, from the age of 15 until 2002, holding most club positions including president. Hilary also remembers the Lambretta rallies that were held in the village when Mike Karlake lived at Kesterfield, the kind of event Northlew had never seen before.



Photo taken at one of Mike Karlakes' Lambretta Rallies

It was not until 2006, at the age of 77 that Hilary flew for the first time, off to Lanzarote on a well-deserved holiday.

We have only scratched the surface of Hilary's life in Northlew and all the changes she has watched and been part of. Thank you so much Hilary for sharing your many memories of Northlew and for sharing the photos too.

Editors note, you can read lots about Mike Karlake, Mr Lambretta on facebook, just search his name.



A Devon Quiz

Simon Dancer's Answers.....

- | | |
|------------------|---------------------------------|
| 1 High Willhays. | 2 Craon |
| 3 Buckfastleigh | 4 The Hound of the Baskervilles |
| 5 Buckfast Abbey | 6 October |
| 7 Joey | 8 1620 |
| 9 Sandy Park | 10 Castle Drogo |

NEWS FROM NORTHLEW METHODIST CHURCH

Since last March, the Methodist Church buildings have been closed, except for funerals, but the work continues.

GOD IS NOT IN LOCKDOWN

We have missed meeting with others not only at our services but at the 50/50 shop and coffee mornings as well. Our minister and others produce a service each week and these can be found on Facebook and under West Devon Methodist Circuit on You Tube.



At this time when we all need reassurance this verse in the Bible might help

**If you would like a prayer or just want a chat please feel free to contact
Rev Liz Singleton 01837 52302 or Winifred Davey 01409 221642**

MB CONSTRUCTION
MARCUS BARRETT
BUILDING CONTRACTOR

ALL BUILDING WORK UNDERTAKEN
NEW BUILDS, EXTENSIONS, RENOVATIONS
TILING, KITCHENS AND BATHROOMS
FULLY INSURED AND FREE ESTIMATES

MERRIAL COTTAGE STATION ROAD
NORTHLEW OKEHAMPTON EX20 3BN

07970 254 964 / 01409 221835
meb271166@gmail.com

Northlew Snooker Club

Did you know Northlew has a Snooker club? New residents may not, as it is tucked away just behind the Victory Hall.

The club has two full size tables, both recently refurbished with new cloth, cushions, and accessories. The room has been decorated. Whilst checking for a new carpet it was discovered that the floor was in a very poor condition and has been repaired. All in all the club is in the best condition for many a year.

Obviously due to the current situation it is presently closed and has been for nearly a year. The members, some of whom have been playing here for over 50 years, are itching to get back and we hope that may be possible very soon. I will post any developments on the Northlew Facebook page. If you play or wish to have a go, then watch out for the updates and we can arrange the details.

Do you know the size of a snooker table? It is 12' x 6' (or just under 4m x 2m) the same size as 4 pool tables!

Simon Dancer

All Things Woolley!

- Naturally coloured knitting yarns
- Sheep skin rugs in a range of colours
- Raw fleeces for crafting, spinning, felting

100% pure wool in the natural colour of the sheep, spun at a local woollen mill

Several colours & yarn weights available from 2 ply to Chunky £5.50/50g ball; whites, creams, greys, mid-dark browns



All from our own flocks raised just outside the village.

Available direct from the farm or for sale in the Square Shop

Can deliver to the Square Shop for collection

South Yeo Farm East, Northlew, EX20 3PS
Tel: 01837 810274 e: southyeofarm@btinternet.com
FB: Farmer Dixon - Twitter: @southyeoeast



POST OFFICE

The Post Office Outreach Service
is now open 3 times a week
in the Church Room

Monday 9.30 - 12.30
Wednesday 9.30 - 12.30
Friday 9.30 - 12.30

We offer

- ✓ Bill Paying
- ✓ Phone Top Up's
- ✓ Car Tax
- ✓ Banking
- ✓ Posting
- ✓ Stamps for sale
- ✓ Foreign Currency (by prior arrangement)

Also stocking

- ✓ Daily Papers
- ✓ Weekly Papers
- ✓ Puzzle Books
- ✓ Stationery items
- ✓ Modest selection of DIY items

Papers and magazines should be
pre-ordered to avoid
disappointment

We are also hoping to offer dry-
cleaning and shoe repairs once C-19
restrictions are removed



THE NORTHLEW SHOW

The Northlew and Ashbury Produce and Craft Show 2020, was a very different event from previous years. It seems a long time ago that we went ahead with a small, Covid secure event on Saturday 5th September.

Sadly there were no food and drink categories, cups, trophies, awards, raffles or auctions, but lots of rosettes, medals, certificates, laughter and smiles alongside the masks, hand gel and social distancing.

£101.20 was raised through voluntary door donations for FORCE cancer charity (charity no. [1140676](#)) in memory of Cathy Fethers, former Show Committee Chair. The Best in Show rosette was won by Gaynor Stevens, for a wonderful embroidery. (bottom right picture)

The Children's Best in Show medal was won by Rosie Ware, aged 9 for her enormous Lockdown Lego! (Top right picture) Very topical and who would have imagined at the time that we would be in Lockdown No.3 in March 2021

This year for the first time, visitors voted for their favourite photos in The People's Vote (using single use pencils!)



Winner of 'Devon, Summer 2020' was Maggie Milledge (bottom left picture)

Winner of 'Trees' was Jo Henderson. (Top left picture)



The Show Committee are hoping to hold an event in September 2021, details nearer the time, and of course, subject to any restrictions still in place year.

Holly Dancer

Northlew Show Secretary



15% Discount off website prices for readers of Northlew News.

Discount for pre-order & collection only, contact us by phone or email to order before collection, discount will then be applied. We don't have a shop so please no walk-ins.



Wide range of tarpaulins from lightweight to heavyweight.



One tonne builders' dumpy bags & 1/2 tonne bags ideal for gardening.



Cotton dust sheets including professional Bolton twill & canvas.



Debris netting & scaffold sheeting.



Natural jute hessian rolls in 6oz and 9oz



Ratchet straps in various sizes.



Blue poly rope in 30m, 220m & 500m lengths. Bungee cord also available.



Privacy netting and shade sail nets.

Please check out our website for our complete range of products including our new pop up canopies.

Web: www.tarpaflex.co.uk

Tel: 01409 221192

E-mail: sales@tarpaflex.co.uk

(Open 8.45am to 5.30pm Mon-Thurs, 8.45am to 4pm Friday)



Devon ATV's

Keeping you farming!

- We offer a wide range of services including tyres, repairs, servicing, genuine parts, and accessories.
- Collection and drop off available – safe and stress free (terms apply.)
- We also buy used quads, even if they have been sat in a barn for years.

Find us on Facebook @ Devon ATV's

Call today on 07861233615 or email devonatvs@gmail.com

Badminton & Table Tennis at the Victory Hall

Previously, we have been supported by an enthusiastic group of locals, with the emphasis on having fun. It would be great to welcome you all back, along with newcomers.

Nature Walks

I hope we can get out walking together again while there is some Spring left, and this year I would like to change things a bit. If you have an interest in the flora and fauna around you, then lets take to the local countryside, and see what we can discover.

I intend to walk from the square, starting at 9:00 once a month on a Saturday. As the emphasis will be on enjoying the nature around Northlew I ask that you leave dogs at home.

If you are interested in Badminton, Table Tennis or the Nature Walks, then please get in touch with Chris Baines

Chrisbaines63@btinternet.com

01409 221362 or 07917 795072

Square Shop Update

by Steve Lofthouse

The Square Shop in the centre of Northlew has now been open for one year which is good going considering most of that has been under lockdown conditions. It seems a good time to reflect on that year to see what has been achieved, what needs to change and how we face the future.

Firstly, more people are now making use of the shop and the range of customers is wide, but there is no doubt that we need to see an increase in turnover to make it viable in the longer term. We do not have to make large profits, but do need to keep turnover up to be able to continue to pay our suppliers in time to ensure deliveries of fresh bread, milk, dairy, vegetables and other local produce.

Secondly, we are currently supporting ten local businesses/individuals which is a good feeling but we need regular custom to make it all work. Our range of grocery items and staples are well-priced and offer good value for money. It's not Lidl, and it never tries to be, but, for instance, our frozen items are currently the same prices as Tesco and occasionally items will be cheaper if we are able to make the most of supermarket offers. We have also increased the opening hours for greater convenience and continue to offer deliveries and a prescription service.

We have exciting plans for the future if able to continue. These include the introduction of a seating area to allow for the service of tea/coffee/cake and snacks for locals and to attract passing trade/visitors. We also aim to have a small library (currently very small indeed) and hope to organise a toolshare scheme so that you can borrow locally that tool you never seem to have to hand when you need it..... There is also the hope that we can offer some work experience to any local young people 16+ for them to gain an insight into the world of work, working with others and volunteering in their own communities which is great for their future prospects. There really are many possibilities and you will have a chance to voice your opinions very soon in a survey - more details to follow.

However, and there is always the big but, if there is not more interest than at present in what is offered it is going to be very difficult to maintain a presence in the village which means: nothing available locally, no opportunity for many people to chat who might otherwise see no one, the loss of an outlet for some lovely local suppliers, no prescription service and the loss of a real asset to the village which can develop over time to meet its needs. It cannot be emphasised enough how frustrating it is to hand over prescriptions at times to individuals who never buy anything - ever - but are happy that we are there to serve them. We will not be in future unless there is more support. Many others drive by and never call in for anything which is a great shame, as even a small but regular purchase helps the overall situation. Remember too that you can order bread and cakes, superb vegetables, and local meat twice weekly which will save a trip out perhaps. Please take a moment to think if you can support us in some way, and if you already do, then thank you.

We look forward to seeing you and hope to be able to serve refreshments outside when spring finally arrives!

Thank you, Steve & Shirley

Coming up in future editions of the Northlew News:

A little birdie tells me that there might be a wildlife profile for a bird that we can all look out for in our gardens or the hedgerows.

There will also be room for you to write something if you would like.... I'd really like to hear from some younger people in the parish, or anyone who fancies writing a book / film / album / game / recipe review. There really is room for so much more from our community in our community magazine!

Just email me at Northlewnews@gmail.com or ping me a message on facebook and if you aren't a wizard on the computer there is a chance you'll know Mum (Marg Rundle) so get in touch with me via her!

Thanks Celia



Piers' Sheds & Animal Housing

Over 25 years' experience

providing all types of bespoke garden buildings, field shelters,
kennels, poultry / small animal housing, and many other timber products

We are always happy to work with you to develop your ideas,

One-off commissions or large orders

Please contact us with any enquiries

Phone: 01837 52406 or 07816 446574

Email: piers@piersshedsandanimalhousing.co.uk

Website: www.piersshedsandanimalhousing.co.uk

Community Contacts

Organisation	Contact details
Okehampton Medical Centre	01837 52233
Okehampton Community Hospital	01837 658000
Blake House Surgery, Black Torrington	01409 231628
NHS Direct	0845 4647
Okehampton Crime Stoppers	0845 2777444 or 101 (non emergency)
Okeford Vets	01837 52148
North Park Veterinary Group	01837 658777
mydentist, Okehampton	01837 52745
Okehampton Cinema	01837 658586
Inkprint, Okehampton	01837 52937
West Devon Borough Council	01822 813600
Devon County Council	0845 1551015
Reporting a power cut	Call 105 (https://www.powercut105.com)
Floodline Telephone Number	03459 881188
Citizens Advice Bureau	08444 111444

LICENSING ACT 2003

We The Gotland Gin Company do hereby give notice that on 1st March 2021 we applied to the Licensing Authority at West Devon Borough Council for a variation to the Premises Licence at Church Cottage, 3 Church Road, Highampton, EX21 5LS known as Gotland Gin.

The application is to:

- Amend the hours for opening and sale of alcohol for consumption on and off the premises to Monday to Sunday from 10am to 11.30pm.
- Include additional areas on the premises licence plan.
- Remove two conditions and include additional conditions to promote the licensing objectives.

Any person wishing to make representations to this application may do so in writing to The Licensing Manager, West Devon Borough Council, Kilworthy Park, Drake Road, Tavistock, PL19 0BZ, or by email: licensing@swdevon.gov.uk .

Representations must be received NO LATER than 29th March 2021.

A copy of the application can be viewed at the Licensing Authority's address during normal office hours.

It is an offence knowingly or recklessly to make a false statement in connection with this application, the maximum fine on summary conviction being £5000.

Signed: The Gotland Gin Company
Dated: 1st March 2021



**FREE
LOCAL
DELIVERY**

GOTLAND GIN

**OPENING
12 APRIL**

- **Distillery Tours**
- **Taste Experiences**
- **Gotland Gin Bar**

www.gotlandgin.co.uk
Tel. 01409 231527
Mob. 07764 277038
email: info@gotlandgin.co.uk